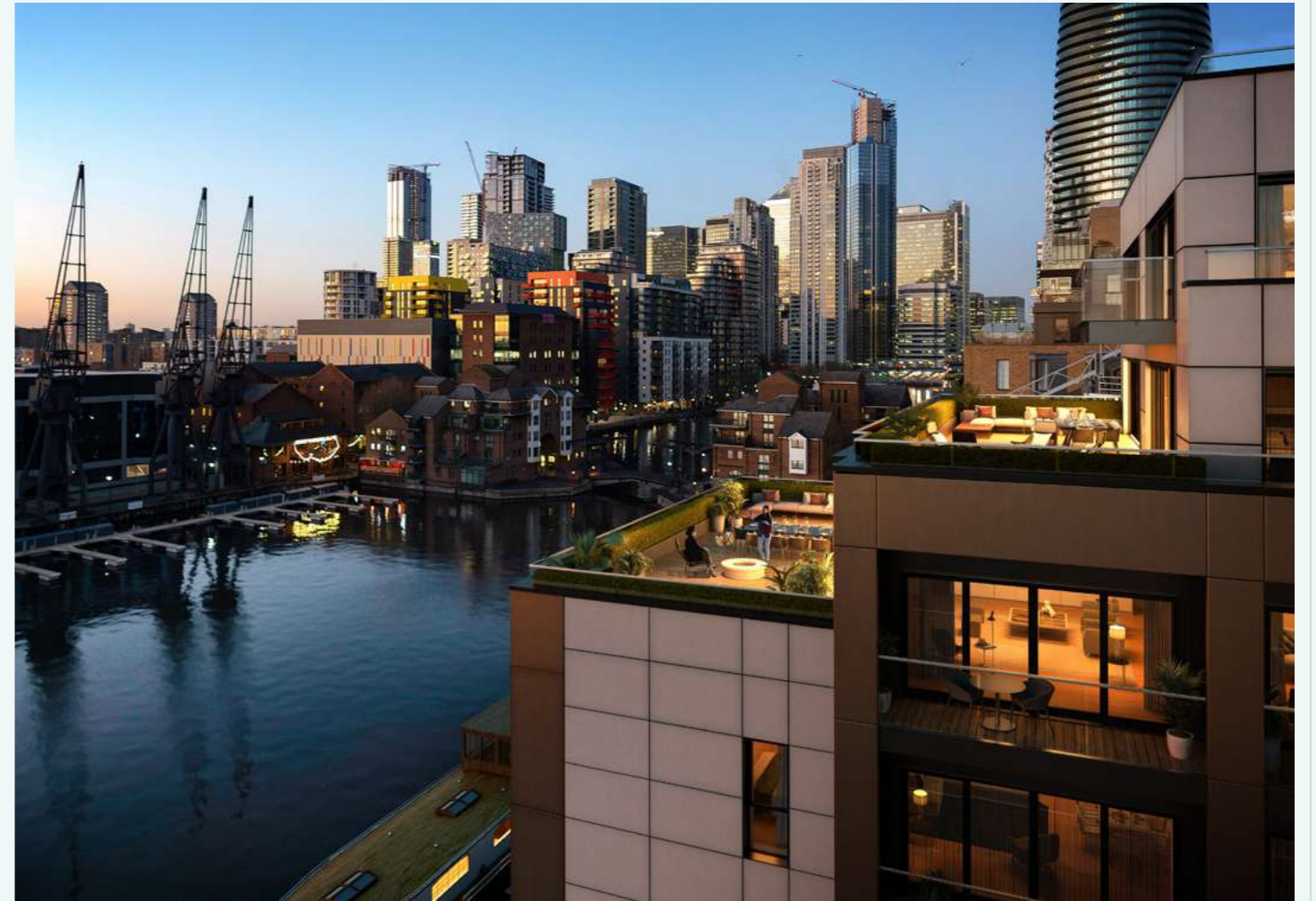


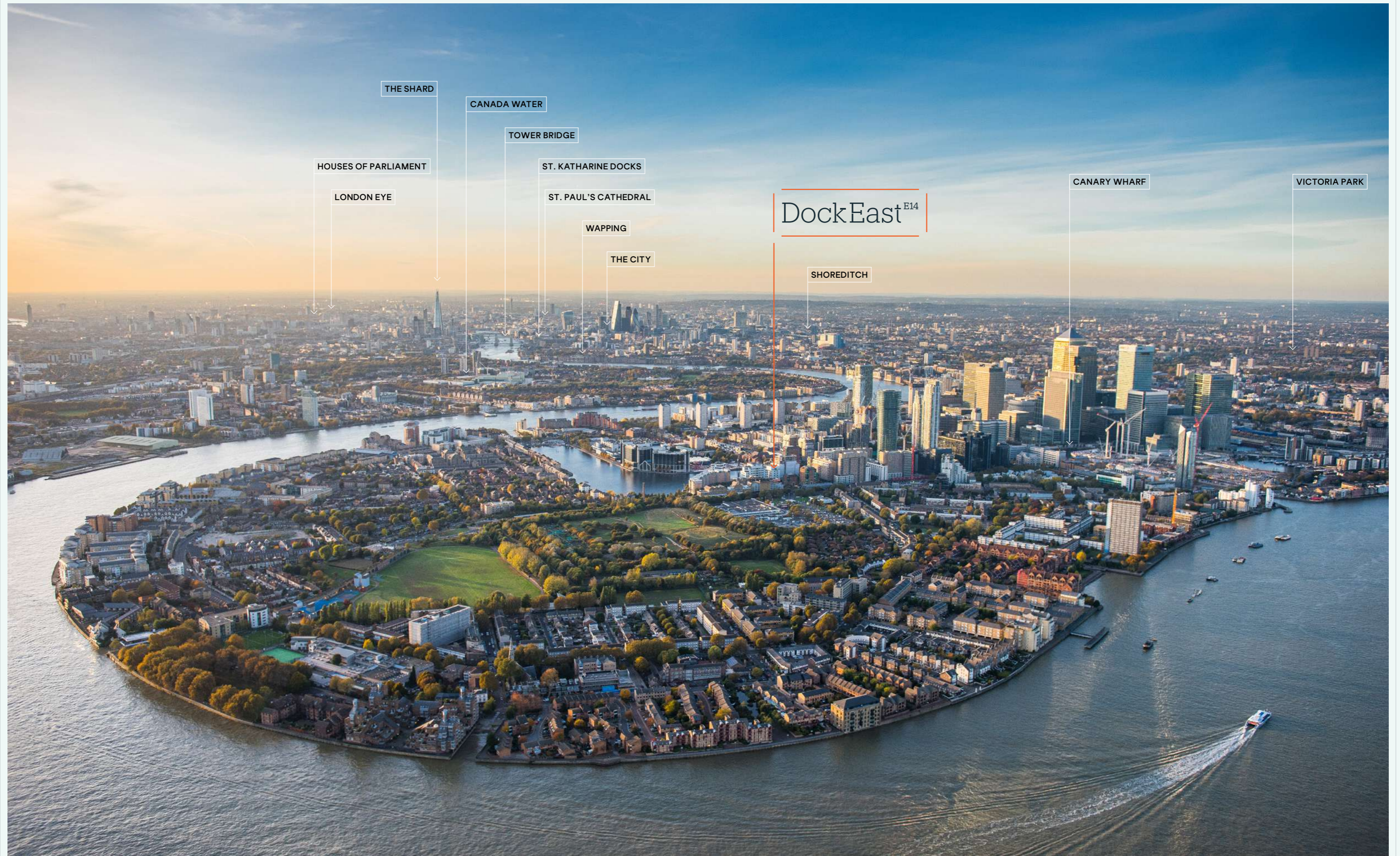
DockEast^{E14}



East London's little secret

On the doorstep of Canary Wharf but with a creative dockside identity all its own, the Isle of Dogs is an atmospheric and historic corner of London. Reimagined for a new generation, this vibrant and unique riverside neighbourhood is now home to DockEast, an innovative contemporary development at the heart of the renaissance.







FOOD AND DRINKS

- 1 Boisdale
- 2 Iberica
- 3 One Canada Square
- 4 Plateau
- 5 Roka
- 6 Giant Robot Street Food Market
- 7 Goodman Canary Wharf
- 8 The Ivy – Canary Wharf
- 9 The Narrow by Gordon Ramsay
- 10 Pepper Saint Ontiod
- 11 The Gun
- 12 Big Easy
- 13 Burger and Lobster
- 14 The Sipping Room
- 15 Lotus Chinese Floating Restaurant
- 16 The George
- 17 Hubub Bar & Kitchen
- 18 KERB Street Food Market
- 19 Piggy's Café
- 20 640East

SHOPPING

- 21 Jubilee Place
- 22 Cabot Place
- 23 Crossrail Place
- 24 Canada Place
- 25 Waitrose and John Lewis
- 26 Asda Isle of Dogs Superstore

ATTRACTIONS AND POINTS OF INTEREST

- 27 National Maritime Museum (South of River)
- 28 Museum of London Docklands
- 29 The O2
- 30 Billingsgate Market
- 31 Crossrail Place Roof Garden
- 32 Mudchute Park and Farm
- 33 Docklands Sailing and Watersports Centre
- 34 Greenwich Peninsula Golf Range
- 35 Trinity Buoy Wharf
- 36 Riverside Island Gardens

ENTERTAINMENT AND FITNESS

- 37 Everyman Cinema Canary Wharf
- 38 Third Space Gym and Spa
- 39 Barrys Boot Camp

EDUCATION

- 40 Canary Wharf College, East Ferry Primary (Ofsted Outstanding)
- 41 Canary Wharf College, Glenworth Primary (Ofsted Outstanding)
- 42 University of Greenwich, London (South of River)
- 43 UCL School of Management

Regeneration Developments

Underground Overground DLR National Rail Crossrail

Discover your London



Journey times

CANARY WHARF

A 16 minute walk from DockEast, Canary Wharf Station is well serviced by the Jubilee line and the DLR. The new Crossrail Elizabeth Line will also be running through Canary Wharf, and is due to be open by early 2021.

JUBILEE LINE

Stratford	12 minutes
London Bridge	12 minutes
Waterloo	11 minutes
Westminster	15 minutes
Bond Street	18 minutes
Wembley	38 minutes

CROSSRAIL

Liverpool Street	6 minutes
Tottenham Court Road	11 minutes
Bond Street	13 minutes
Paddington	17 minutes
Heathrow Airport	39 minutes

CROSSHARBOUR

The closest station to DockEast, Crossharbour is just a 3 minute walk away and gives you easy access to many key local and wider areas.

DLR

Greenwich	12 minutes
Excel	26 minutes
London City Airport	25 minutes
Stratford	21 minutes
Bank	19 minutes

GETTING AROUND

IN June 2019, plans were announced for a new 7.5km cycle route linking Isle of Dogs with the centre of Hackney passing through Victoria Park, Bow, Mile End, and Limehouse.

Explore your neighbourhood

Originally a bustling hub for shipbuilding and maritime industry in the 19th Century, the Isle of Dogs has always been a distinct London neighbourhood. Shaped by its geography and history, it's where the old dockside past meets its inspirational new future.



PROUDLY DIFFERENT

This proudly different part of London has a strong independent spirit amongst the creative community who are making it their home. Here you'll find a patchwork of old riverside streets to explore while discovering what makes the area tick. The mix of characterful old pubs, eclectic restaurants and artistic cafés will soon make you feel at home.



IBERICA LA TERRAZA



WHERE OLD MEETS NEW

Perhaps the perfect old East End local, The George is the place to go to really soak up the old neighbourhood atmosphere of the Isle of Dogs. But even here things are changing. On the menu you'll find crispy squid with truffle and Parmesan fries alongside Maureen's Pie & Mash, an East End institution ran by the same family for nearly 60 years. And remember it's liquor never gravy.



INVENTIVE BARS THAT FEEL LIKE HOME

In the eves of a former Victorian chapel Hubub Bar & Kitchen is an arty slightly Bohemian kind of spot. Whether you arrive for a long brunch or the perfect patty with beef sourced from John Charles of Blackheath, the community ambience will have you feeling like a local. Make sure you check out the regular exhibitions on the wall and the programme for the small theatre downstairs.

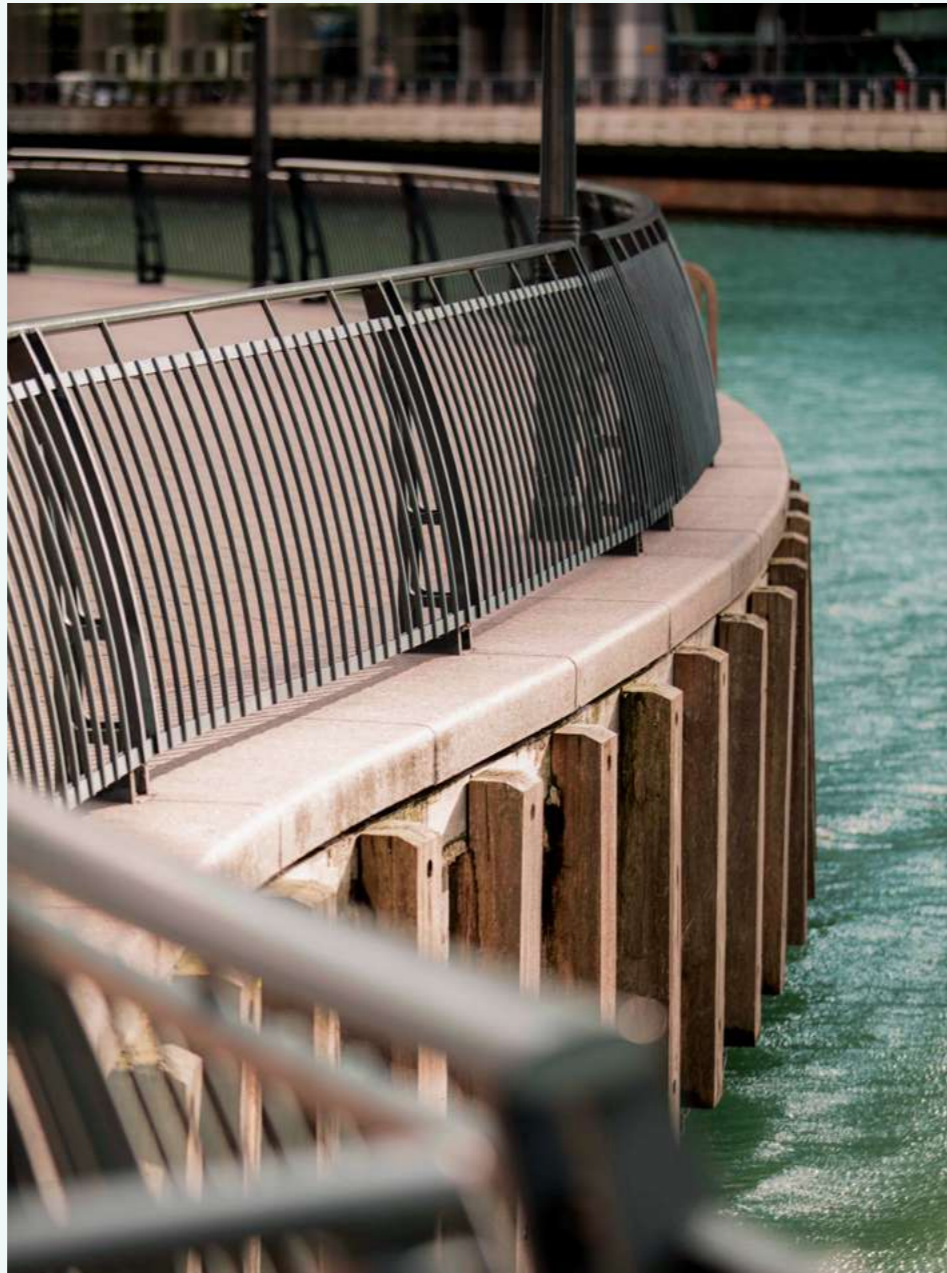
DISCOVER 640 EAST

640 East's story began with the conversion of two shipping containers (640 being the square footage) into a café serving specialty grade blends from across the world. After partnering with Islington's artisan producers Caravan Coffee Roasters, the inventive owners now open up 640 East in the evening with the help of breweries like Beavertown and London Fields. So you can end as well as start your day here. Under the maxim 'Leave The Heard Behind', Black Sheep Coffee is as fiercely independent as you might expect from their name. Founded in 2013 by Eirik and Gabriel they have a knack of sourcing the most interesting Arabica beans around.



DOCKSIDE LOCALS

At the Grade II listed pub The Gun open fires and river views from the terrace complement one of the best Sunday roasts in East London. Another popular dockside place is the curiously named Pepper Saint Iniod (Iniod stands for In Isle of Dogs), a small pub with mismatched furniture overlooking the tranquil waters of Millwall Dock. Try their modern European dishes like five-hour ox cheek and beef dripping potatoes.



BOISDALE RESTAURANT

RENOWNED DOCKSIDE RESTAURANTS

Head to the docks and you'll find renowned restaurants making the most of their waterside setting. In an elegant room with a buzzy atmosphere, Robotayaki specialists Roka will have you coming back for Northern Japanese small plates like Yaki Hotate (Scallop Skewers). A modern British restaurant with a great little oyster bar and cigar library, Boisdale is known for its jazz and blues nights (Jools Holland is Patron of Music here).

From Michelin starred Casa Marcial in Asturias, Chef Nacho Manzano now helms the kitchen at Iberica. Alongside the classic tapas, make sure you try Nacho's favourite dish Autumn, a mushroom and chestnut broth inspired by a walk in the forest. Then there's Goodman, a steak house on South Quay with meat dry-aged on-site and selected by the chefs at each sitting. Check "The Cut" black board for the day's choices or be like a regular and ask them to cut your steak to order.

STREETFOOD

East London's street food scene has also well and truly arrived here. The latest chapter in the story of Street Feast, Giant Robot takes over a rooftop on a dockside footbridge with some of London's best vendors – from Black Bear Burger to the Thunderbird wing kings. Begin the night with rounds at one of the four bars with a 38 tap craft beer selection before moving on to the 360° Island Bar for cocktails. Over at West India Quay, Kerb houses residents like Hanok Korean BBQ and the classic Taiwanese lunchbox of Bian Dang.

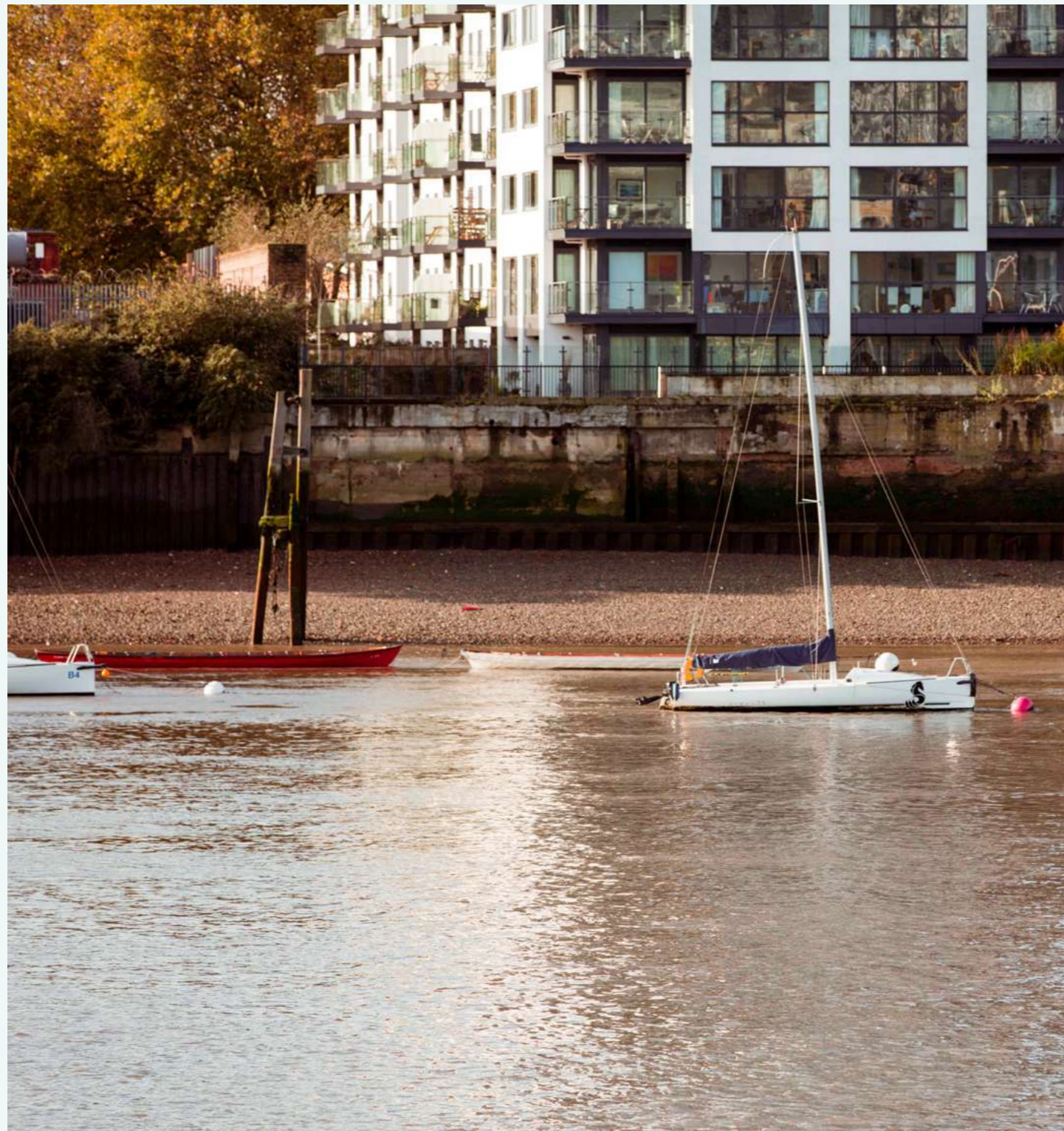


STREET FOOD

CREATIVE NEARBY LOCATION

Once the testing ground for lighthouses and other maritime equipment, Trinity Buoy Wharf is now a vibrant creative community with tenants like English National Opera. Part of an award winning architectural recycling project, Container City houses artists' studios and other creative work spaces. With art trails, a sculpture park and London's only lighthouse it's a great way to spend an afternoon. Make sure you see Martin Richman's steel and light sculpture The Ascenda 1977 and Marcus Vergette's Time and Tide Bell that rings to mark each high tide.

Feel good by the waterside



With Canary Wharf just a short walk away and the West End a quick hop on the DLR, DockEast is well placed to make the best of London's bustle. But it's also easy to unwind here, with the majesty of the Thames and green space all around you.

Mudchute Park owes its name to the sludge that was pumped out of Millwall Dock and once dumped here. Set in over 30 acres it really does bring the countryside to East London. An oasis of meadows and grassland, a Stone's Throw from Canary Wharf, this tranquil park and nature reserve with abundant wildlife even has a working farm, stables and equestrian centre. The farm prides itself on its collection of over 100 rare breed animals, so get ready to meet its resident cows, sheep, pigs and even llamas.

Then take a stroll through Millwall Park whose centrepiece is the old railway viaduct and former ropewalk that evoke Docklands' industrial past. Awarded Green Flag status for its biodiversity and range of facilities, it now offers everything from a stroll or cycle through tree lined meadows to games of tennis and cricket. It's also home to Millwall Rugby Club and an outdoor gym with free classes for the community.

At the southern end is the Riverside Island Gardens, where views across to the Royal Observatory of Greenwich really do take your breath away. Pick up the Thames Path here for a fascinating Docklands walk past the old wharfs where the maritime history of the area was forged. Or head through the foot tunnel to Greenwich for the Maritime Museum and Cutty Sark. The 180 acres of Greenwich Park also invite a long Sunday morning cycle ride before lunch near the famous market.

For the hobby you never knew you were missing and a new way to experience the river head to Docklands Sailing and Watersport Centre. You'll be learning how to tie a cleat hitch knot before you know it.

Ever thought of a dip in the Thames? Don your wetsuit and join the club on one of its open water swimming mornings. Or try their Monday night kayaking sessions down the Thames before a couple of well-earned beers with other members.

Alongside Tsukiji in Tokyo, Billingsgate is one of the world's great fish markets with roots going back to the 16th Century. Set your alarm for 3am to get there in time to beat the restaurateurs or arrive at 7am to bag the end of day bargains from the wholesalers. It's hungry work so finish off at Piggy's café for bacon and scallops or haddock with poached egg. Now that's how to start to the day.



Designed for better living

Conceived through the principle that great design can bring better living, this groundbreaking development balances delicate urban style with rich Docklands heritage. Consisting of 108 one and two bedroom apartments, each uniquely considered for spacious and sophisticated living, DockEast brings you the best of urban London in a community to be part of.



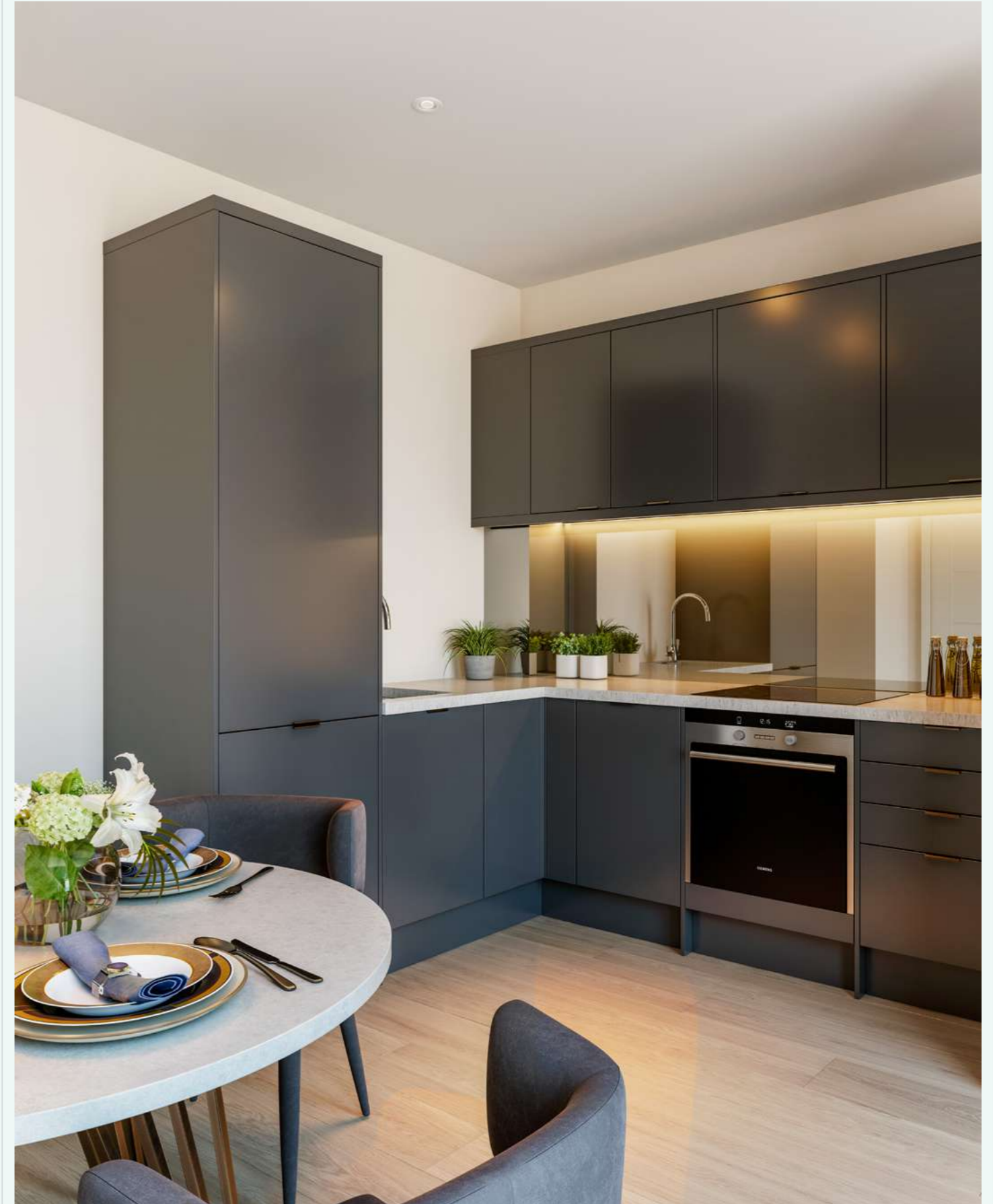
Looking out across Millwall Dock's historic waters, DockEast has been transformed into a clean lined modernist building by acclaimed London architects Chassay+Last. With balconies giving impressive views of the docks and the vessels that still pass through here, these refined apartments make the most of their enviable position.





Sink into your luxury sofa and enjoy the mix of style and comfort in these thoughtfully designed lounges. Envisaged by Mayfair design studio Sixty3 London, the interiors offer both elegance and practicality. The neutral colour scheme and oak flooring create a calming ambience while under floor heating and LED lighting adds to the sophistication.

Stone worktops with smoked mirror splashbacks and bronze effect handles create a fashionable look in these contemporary kitchens. With high quality appliances and integrated ovens and dishwashers from well-known brands, the kitchen areas are as stylish as they are functional.





The open plan design gives a sense of space and continuity with the dining areas flowing naturally from the kitchens. Oak flooring and a muted colour scheme provide an air of effortless chic.

Hushed grey walls and wool twist carpets afford a calm and elegant end to your day in these modish yet serene bedrooms. Fitted wardrobes create a clean lined finish while opening up space.

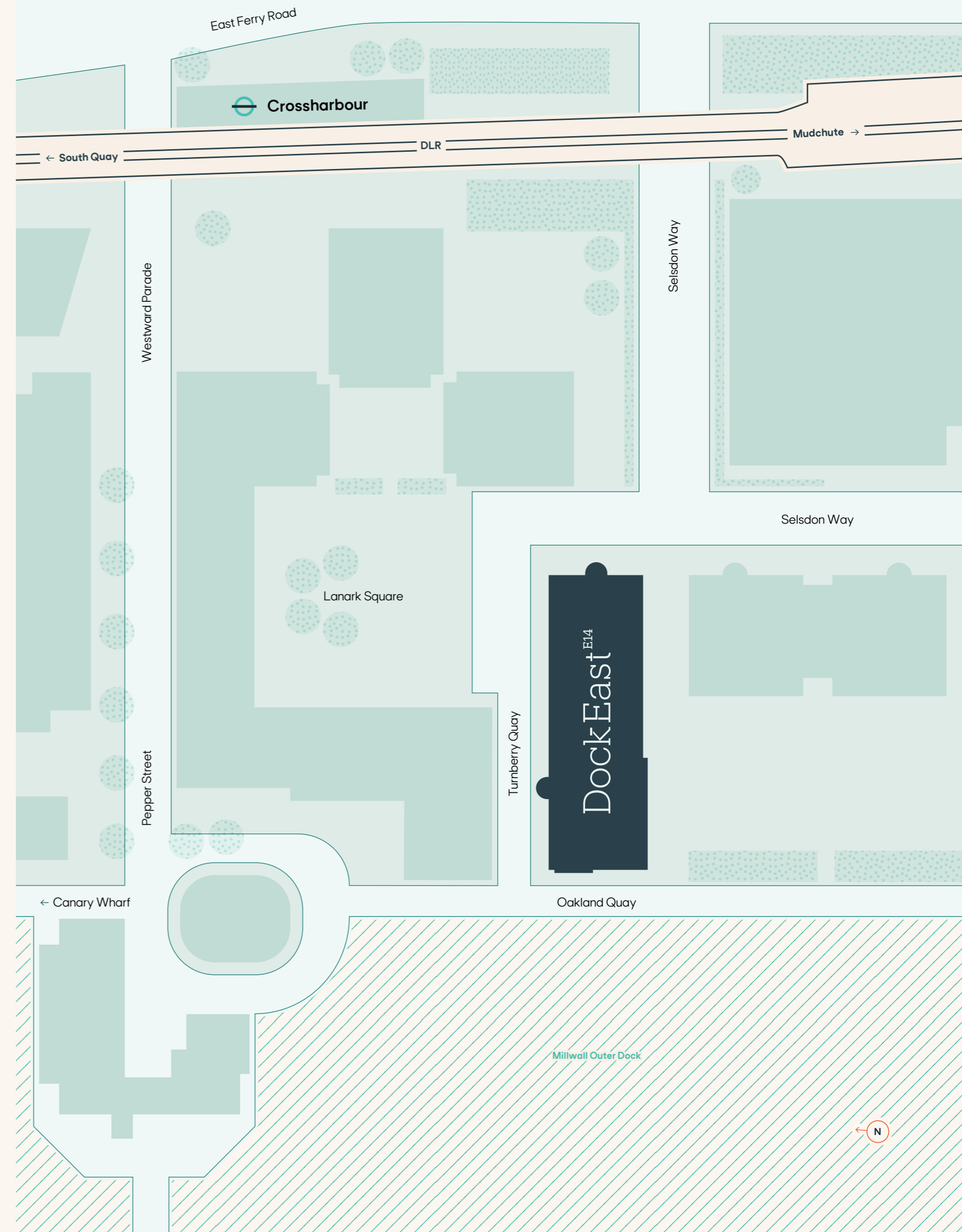




To complete your beautifully envisaged new home these porcelain tiled bathrooms ooze sophistication. The centrepiece of the carefully coordinated scheme is the white stone and glass enclosed thermostatic shower.

Floorplans

With innovative design at the core of the vision for DockEast, each of the apartments are uniquely considered for spacious and sophisticated living. The open plan design gives a sense of continuity throughout, enhancing the 2,000 sq ft. of space. Envisaged by Mayfair design studio Sixty3 London the interiors offer both elegance and practicality. So whether you're sinking into your luxury sofa in the thoughtfully designed lounges or entertaining in the contemporary kitchens the focus is on both sophistication and comfort. Wide balconies offering 300sq ft of outdoor space complete these impressively envisaged apartments.



Ground Floor

APARTMENT G.1

Kitchen & Living	5.56m x 3.00m	18.24ft x 9.84ft
Bedroom 1	3.93m x 2.56m	12.89ft x 8.40ft
Balcony	0.60m x 5.80m	1.97ft x 19.03ft
TOTAL AREA	32 sq m	342 sq ft

APARTMENT G.2

Kitchen & Living	5.45m x 3.00m	17.88ft x 9.84ft
Bedroom 1	3.83m x 2.56m	12.56ft x 8.40ft
Balcony	1.43m x 5.75m	4.68ft x 18.86ft
TOTAL AREA	31 sq m	337 sq ft

APARTMENT G.3

Kitchen & Living	5.94m x 3.00m	19.49ft x 9.84ft
Bedroom 1	4.31m x 2.55m	14.15ft x 8.37ft
Balcony	1.43m x 5.84m	4.68ft x 19.16ft
TOTAL AREA	34 sq m	361 sq ft

APARTMENT G.4

Kitchen & Living	4.57m x 4.89m	14.99ft x 16.03ft
Bedroom 1	3.40m x 3.01m	11.15ft x 9.89ft
Bedroom 2	3.40m x 2.78m	11.15ft x 9.12ft
Balcony	8.05m x 1.30m	26.40ft x 4.27ft
TOTAL AREA	49 sq m	532 sq ft

APARTMENT G.5

Kitchen & Living	3.92m x 6.03m	12.86ft x 19.78ft
Bedroom 1	3.35m x 3.02m	10.99ft x 9.91ft
Bedroom 2	3.35m x 2.83m	10.99ft x 9.27ft
Balcony	8.05m x 1.30m	26.40ft x 4.27ft
TOTAL AREA	50 sq m	536 sq ft

APARTMENT G.6

Kitchen & Living	8.13m x 2.82m	26.67ft x 9.24ft
Bedroom 1	4.05m x 2.74m	13.30ft x 9.00ft
Balcony	1.17m x 5.74m	3.84ft x 18.83ft
TOTAL AREA	39 sq m	422 sq ft

APARTMENT G.7

Kitchen & Living	4.58m x 3.92m	15.02ft x 12.86ft
Bedroom 1	2.95m x 2.85m	9.69ft x 9.35ft
Balcony	3.97m x 1.17m	13.01ft x 3.84ft
TOTAL AREA	36 sq m	382 sq ft

APARTMENT G.8

Kitchen & Living	3.80m x 4.51m	12.48ft x 14.81ft
Bedroom 1	2.50m x 2.75m	8.20ft x 9.01ft
Balcony	4.80m x 1.17m	15.75ft x 3.84ft
TOTAL AREA	35 sq m	379 sq ft

APARTMENT G.9

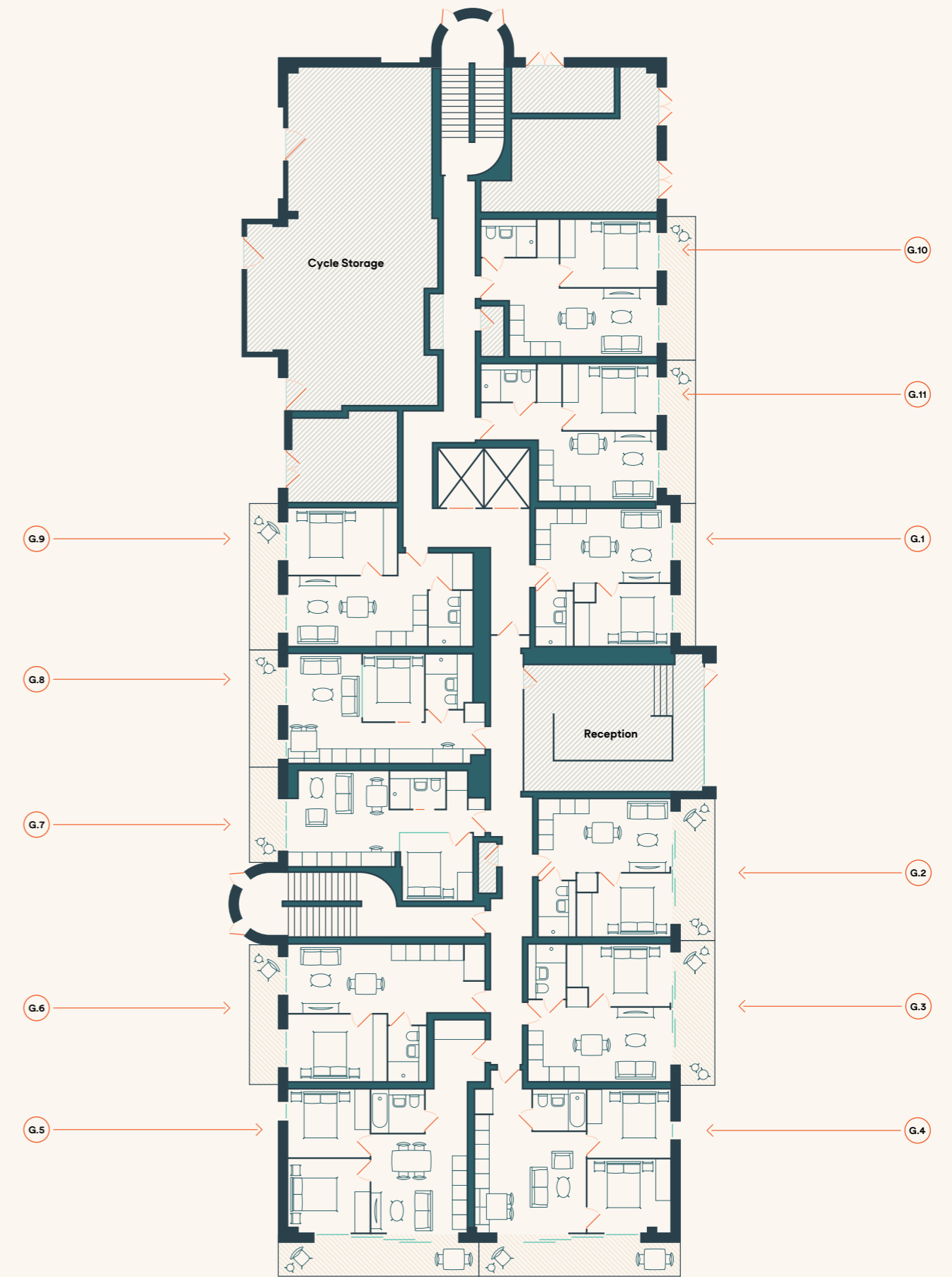
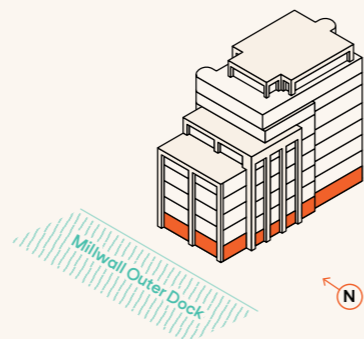
Kitchen & Living	5.74m x 2.87m	18.83ft x 9.40ft
Bedroom 1	4.50m x 2.70m	2.25ft x 5.02ft
Balcony	5.96m x 1.17m	19.55ft x 3.84ft
TOTAL AREA	38 sq m	404 sq ft

APARTMENT G.10

Kitchen & Living	6.08m x 2.77m	19.95ft x 9.07ft
Bedroom 1	4.06m x 2.77m	13.31ft x 9.09ft
Balcony	5.94m x 1.17m	19.49ft x 3.84ft
TOTAL AREA	39 sq m	414 sq ft

APARTMENT G.11

Kitchen & Living	4.86m x 2.85m	15.93ft x 9.36ft
Bedroom 1	3.86m x 2.71m	12.65ft x 8.88ft
Balcony	5.99m x 1.17m	19.64ft x 3.84ft
TOTAL AREA	35 sq m	380 sq ft



First Floor

APARTMENT 1.1

Kitchen & Living	5.56m x 3.00m	18.24ft x 9.84ft
Bedroom 1	3.93m x 2.56m	12.89ft x 8.40ft
TOTAL AREA	32 sq m	342 sq ft

APARTMENT 1.2

Kitchen & Living	5.86m x 3.00m	19.23ft x 9.84ft
Bedroom 1	4.23m x 2.55m	13.88ft x 8.37ft
Balcony	5.88m x 1.39m	19.29ft x 4.56ft
TOTAL AREA	34 sq m	361 sq ft

APARTMENT 1.3

Kitchen & Living	5.46m x 3.01m	17.90ft x 9.87ft
Bedroom 1	5.45m x 2.56m	17.87ft x 8.40ft
Balcony	5.88m x 1.39m	19.29ft x 4.56ft
TOTAL AREA	31 sq m	337 sq ft

APARTMENT 1.4

Kitchen & Living	5.86m x 3.00m	19.23ft x 9.86ft
Bedroom 1	4.24m x 2.55m	13.92ft x 8.37ft
Balcony	5.88m x 1.39m	19.29ft x 4.56ft
TOTAL AREA	34 sq m	361 sq ft

APARTMENT 1.5

Kitchen & Living	4.57m x 6.03m	14.99ft x 19.78ft
Bedroom 1	3.40m x 3.03m	11.15ft x 9.93ft
Bedroom 2	3.40m x 2.83m	11.15ft x 9.27ft
Balcony	8.05m x 1.30m	26.40ft x 4.27ft
TOTAL AREA	49 sq m	532 sq ft

APARTMENT 1.6

Kitchen & Living	3.92m x 6.03m	12.86ft x 19.78ft
Bedroom 1	3.02m x 3.34m	9.91ft x 10.94ft
Bedroom 2	3.34m x 2.83m	10.94ft x 9.27ft
Balcony	8.05m x 1.30m	26.40ft x 4.27ft
TOTAL AREA	50 sq m	536 sq ft

APARTMENT 1.7

Kitchen & Living	8.13m x 2.82m	26.67ft x 9.24ft
Bedroom 1	4.05m x 2.72m	13.30ft x 8.93ft
Balcony	1.00m x 1.50m	3.28ft x 4.92ft
TOTAL AREA	39 sq m	422 sq ft

APARTMENT 1.8

Kitchen & Living	4.68m x 3.92m	15.34ft x 12.86ft
Bedroom 1	2.98m x 2.81m	9.79ft x 9.23ft
TOTAL AREA	36 sq m	382 sq ft

APARTMENT 1.9

Kitchen & Living	4.51m x 2.92m	14.81ft x 9.59ft
Bedroom 1	2.76m x 2.50m	9.06ft x 8.20ft
TOTAL AREA	35 sq m	379 sq ft

APARTMENT 1.10

Kitchen & Living	5.74m x 2.87m	18.83ft x 9.40ft
Bedroom 1	4.50m x 2.70m	14.75ft x 8.85ft
TOTAL AREA	38 sq m	404 sq ft

APARTMENT 1.11

Kitchen & Living	6.18m x 3.65m	20.26ft x 11.96ft
Bedroom 1	2.87m x 2.75m	9.40ft x 9.02ft
TOTAL AREA	30 sq m	327 sq ft

APARTMENT 1.12

Kitchen & Living	6.27m x 2.85m	20.57ft x 9.35ft
Bedroom 1	2.55m x 3.97m	8.36ft x 13.01ft
Balcony	5.31m x 1.28m	17.40ft x 4.20ft
TOTAL AREA	33 sq m	351 sq ft

APARTMENT 1.13

Kitchen & Living	3.64m x 5.79m	11.94ft x 19.00ft
Bedroom 1	2.92m x 3.01m	9.58ft x 9.88ft
TOTAL AREA	35 sq m	376 sq ft

APARTMENT 1.14

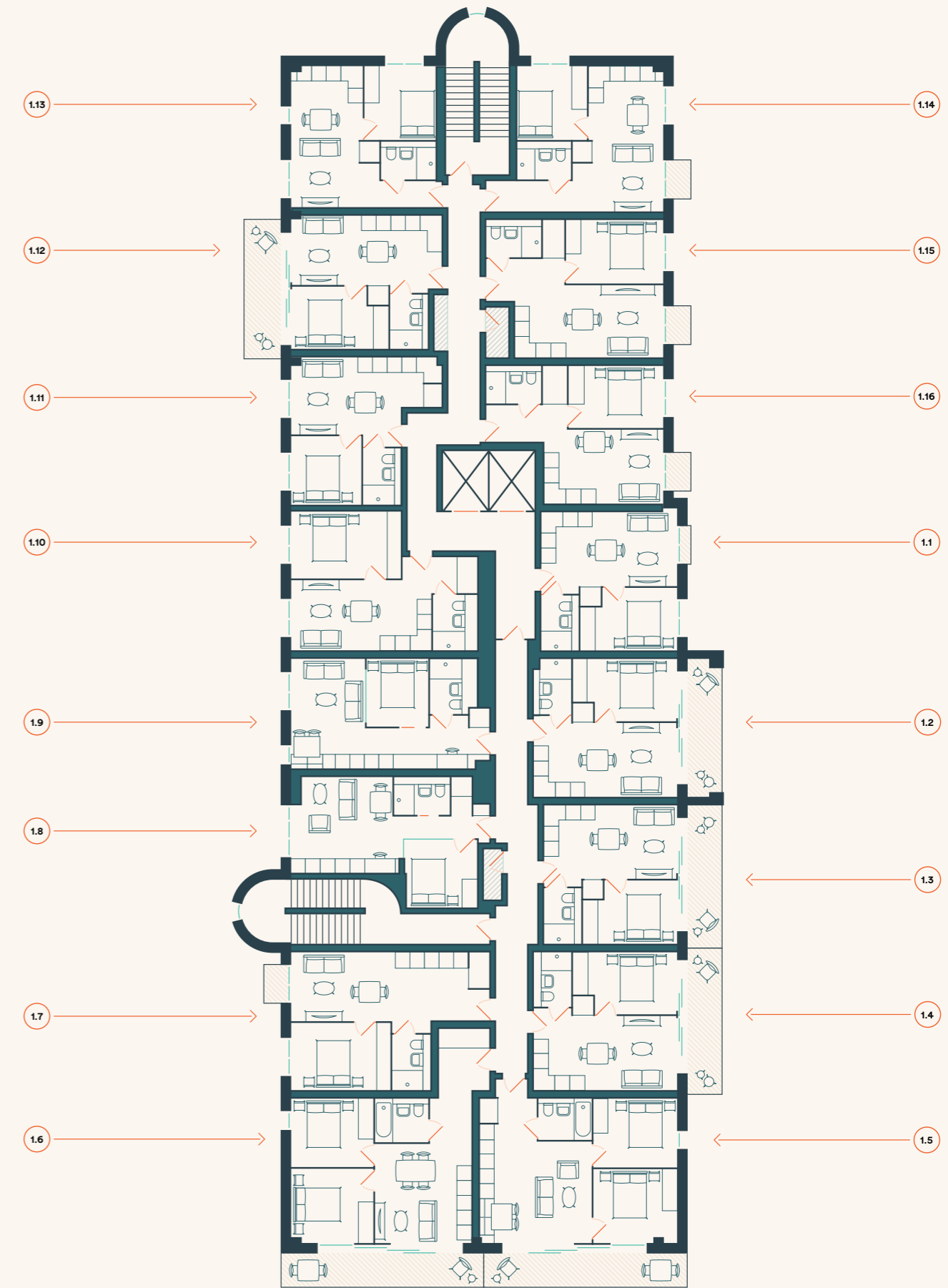
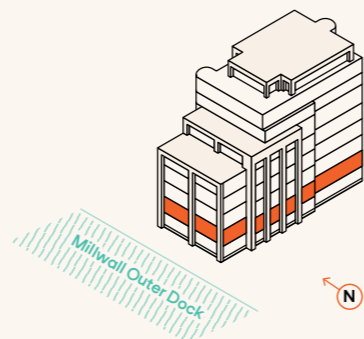
Kitchen & Living	3.70m x 5.96m	12.14ft x 19.56ft
Bedroom 1	2.90m x 3.01m	9.51ft x 9.88ft
Balcony	1.00m x 1.50m	3.28ft x 4.92ft
TOTAL AREA	38 sq m	407 sq ft

APARTMENT 1.15

Kitchen & Living	6.08m x 4.01m	19.95ft x 13.14ft
Bedroom 1	3.97m x 2.60m	13.03ft x 8.53ft
Balcony	1.00m x 1.50m	3.28ft x 4.92ft
TOTAL AREA	39 sq m	414 sq ft

APARTMENT 1.16

Kitchen & Living	4.86m x 3.01m	15.93ft x 9.88ft
Bedroom 1	3.86m x 2.55m	12.65ft x 8.37ft
Balcony	1.00m x 1.50m	3.28ft x 4.92ft
TOTAL AREA	35 sq m	380 sq ft



Second Floor

APARTMENT 2.1

Kitchen & Living	5.56m x 3.00m	18.24ft x 9.84ft
Bedroom 1	3.93m x 2.56m	12.89ft x 8.40ft
TOTAL AREA	32 sq m	342 sq ft

APARTMENT 2.2

Kitchen & Living	5.86m x 3.00m	19.23ft x 9.84ft
Bedroom 1	4.23m x 2.55m	13.88ft x 8.37ft
Balcony	5.88m x 1.39m	19.29ft x 4.56ft
TOTAL AREA	34 sq m	361 sq ft

APARTMENT 2.3

Kitchen & Living	5.46m x 3.01m	17.90ft x 9.87ft
Bedroom 1	5.45m x 2.56m	17.87ft x 8.40ft
Balcony	5.88m x 1.39m	19.29ft x 4.56ft
TOTAL AREA	31 sq m	337 sq ft

APARTMENT 2.4

Kitchen & Living	5.86m x 3.00m	19.23ft x 9.86ft
Bedroom 1	4.24m x 2.55m	13.92ft x 8.37ft
Balcony	5.88m x 1.39m	19.29ft x 4.56ft
TOTAL AREA	34 sq m	361 sq ft

APARTMENT 2.5

Kitchen & Living	4.57m x 6.03m	14.99ft x 19.78ft
Bedroom 1	3.40m x 3.03m	11.15ft x 9.93ft
Bedroom 2	3.40m x 2.83m	11.15ft x 9.27ft
Balcony	8.05m x 1.30m	26.40ft x 4.27ft
TOTAL AREA	49 sq m	532 sq ft

APARTMENT 2.6

Kitchen & Living	3.92m x 6.03m	12.86ft x 19.78ft
Bedroom 1	3.02m x 3.34m	9.91ft x 10.94ft
Bedroom 2	3.34m x 2.83m	10.94ft x 9.27ft
Balcony	8.05m x 1.30m	26.40ft x 4.27ft
TOTAL AREA	50 sq m	536 sq ft

APARTMENT 2.7

Kitchen & Living	8.13m x 2.82m	26.67ft x 9.24ft
Bedroom 1	4.05m x 2.72m	13.30ft x 8.93ft
Balcony	1.00m x 1.50m	3.28ft x 4.92ft
TOTAL AREA	39 sq m	422 sq ft

APARTMENT 2.8

Kitchen & Living	4.68m x 3.92m	15.34ft x 12.86ft
Bedroom 1	2.98m x 2.81m	9.79ft x 9.23ft
TOTAL AREA	36 sq m	382 sq ft

APARTMENT 2.9

Kitchen & Living	4.51m x 2.92m	14.81ft x 9.59ft
Bedroom 1	2.76m x 2.50m	9.06ft x 8.20ft
TOTAL AREA	35 sq m	379 sq ft

APARTMENT 2.10

Kitchen & Living	5.74m x 2.87m	18.83ft x 9.40ft
Bedroom 1	4.50m x 2.70m	14.75ft x 8.85ft
TOTAL AREA	38 sq m	404 sq ft

APARTMENT 2.11

Kitchen & Living	6.18m x 3.65m	20.26ft x 11.96ft
Bedroom 1	2.87m x 2.75m	9.40ft x 9.02ft
TOTAL AREA	30 sq m	327 sq ft

APARTMENT 2.12

Kitchen & Living	6.27m x 2.85m	20.57ft x 9.35ft
Bedroom 1	2.55m x 3.97m	8.36ft x 13.01ft
Balcony	5.31m x 1.28m	17.40ft x 4.20ft
TOTAL AREA	33 sq m	351 sq ft

APARTMENT 2.13

Kitchen & Living	3.64m x 5.79m	11.94ft x 19.00ft
Bedroom 1	2.92m x 3.01m	9.58ft x 9.88ft
TOTAL AREA	35 sq m	376 sq ft

APARTMENT 2.14

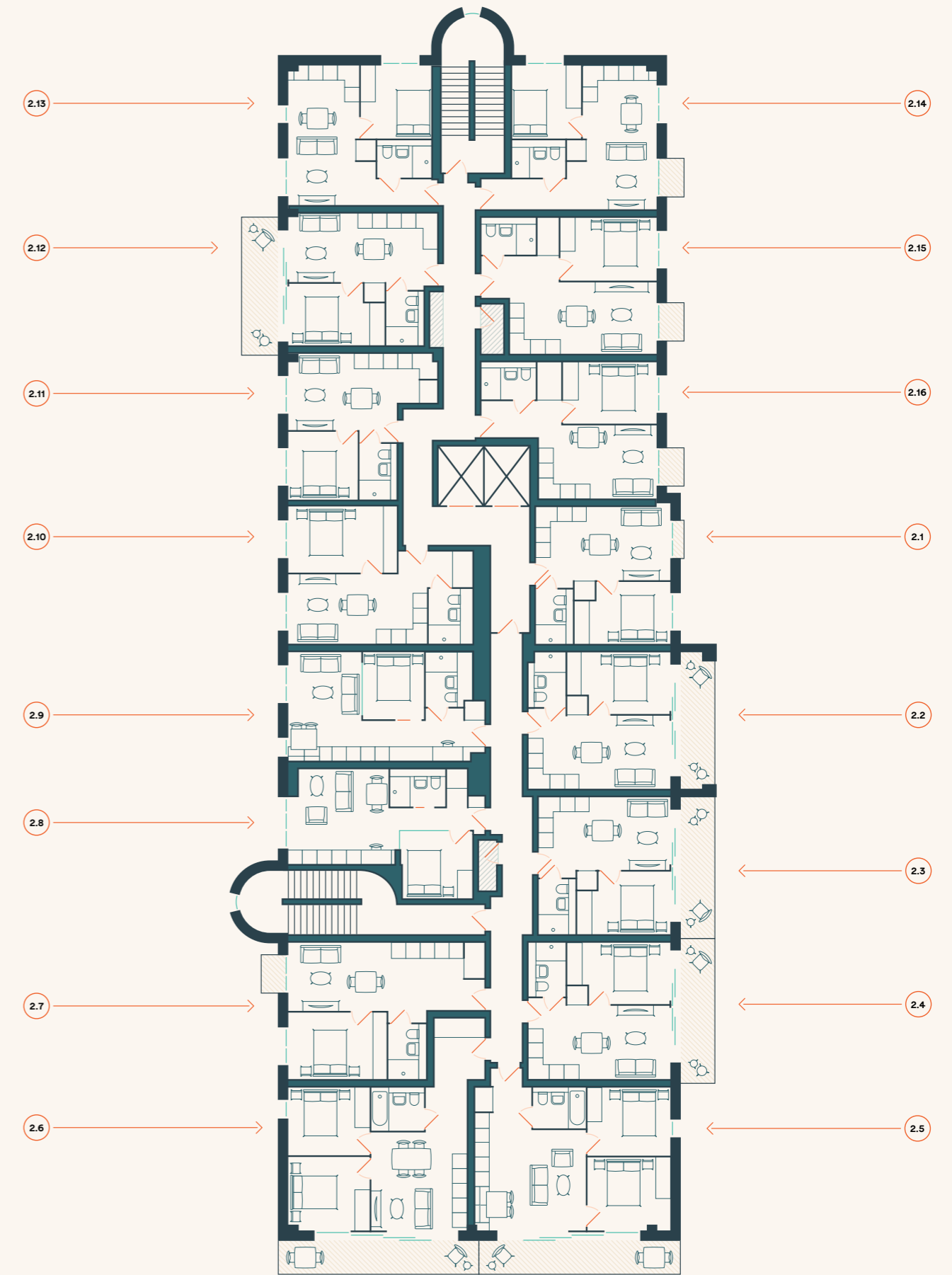
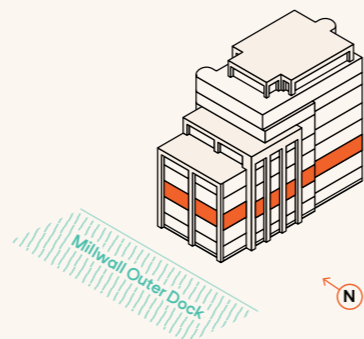
Kitchen & Living	3.70m x 5.96m	12.14ft x 19.56ft
Bedroom 1	2.90m x 3.01m	9.51ft x 9.88ft
Balcony	1.00m x 1.50m	3.28ft x 4.92ft
TOTAL AREA	38 sq m	407 sq ft

APARTMENT 2.15

Kitchen & Living	6.08m x 4.01m	19.95ft x 13.14ft
Bedroom 1	3.97m x 2.60m	13.03ft x 8.53ft
Balcony	1.00m x 1.50m	3.28ft x 4.92ft
TOTAL AREA	39 sq m	414 sq ft

APARTMENT 2.16

Kitchen & Living	4.86m x 3.01m	15.93ft x 9.88ft
Bedroom 1	3.86m x 2.55m	12.65ft x 8.37ft
Balcony	1.00m x 1.50m	3.28ft x 4.92ft
TOTAL AREA	35 sq m	380 sq ft



Third Floor

APARTMENT 3.1

Kitchen & Living	5.56m x 3.00m	18.24ft x 9.84ft
Bedroom 1	3.93m x 2.56m	12.89ft x 8.40ft
TOTAL AREA	32 sq m	342 sq ft

APARTMENT 3.2

Kitchen & Living	5.86m x 3.00m	19.23ft x 9.84ft
Bedroom 1	4.23m x 2.55m	13.88ft x 8.37ft
Balcony	5.88m x 1.39m	19.29ft x 4.56ft
TOTAL AREA	34 sq m	361 sq ft

APARTMENT 3.3

Kitchen & Living	5.46m x 3.01m	17.90ft x 9.87ft
Bedroom 1	5.45m x 2.56m	17.87ft x 8.40ft
Balcony	5.88m x 1.39m	19.29ft x 4.56ft
TOTAL AREA	31 sq m	337 sq ft

APARTMENT 3.4

Kitchen & Living	5.86m x 3.00m	19.23ft x 9.86ft
Bedroom 1	4.24m x 2.55m	13.92ft x 8.37ft
Balcony	5.88m x 1.39m	19.29ft x 4.56ft
TOTAL AREA	34 sq m	361 sq ft

APARTMENT 3.5

Kitchen & Living	4.57m x 6.03m	14.99ft x 19.78ft
Bedroom 1	3.40m x 3.03m	11.15ft x 9.93ft
Bedroom 2	3.40m x 2.83m	11.15ft x 9.27ft
Balcony	8.05m x 1.30m	26.40ft x 4.27ft
TOTAL AREA	49 sq m	532 sq ft

APARTMENT 3.6

Kitchen & Living	3.92m x 6.03m	12.86ft x 19.78ft
Bedroom 1	3.02m x 3.34m	9.91ft x 10.94ft
Bedroom 2	3.34m x 2.83m	10.94ft x 9.27ft
Balcony	8.05m x 1.30m	26.40ft x 4.27ft
TOTAL AREA	50 sq m	536 sq ft

APARTMENT 3.7

Kitchen & Living	8.13m x 2.82m	26.67ft x 9.24ft
Bedroom 1	4.05m x 2.72m	13.30ft x 8.93ft
Balcony	1.00m x 1.50m	3.28ft x 4.92ft
TOTAL AREA	39 sq m	422 sq ft

APARTMENT 3.8

Kitchen & Living	4.68m x 3.92m	15.34ft x 12.86ft
Bedroom 1	2.98m x 2.81m	9.79ft x 9.23ft
TOTAL AREA	36 sq m	382 sq ft

APARTMENT 3.9

Kitchen & Living	4.51m x 2.92m	14.81ft x 9.59ft
Bedroom 1	2.76m x 2.50m	9.06ft x 8.20ft
TOTAL AREA	35 sq m	379 sq ft

APARTMENT 3.10

Kitchen & Living	5.74m x 2.87m	18.83ft x 9.40ft
Bedroom 1	4.50m x 2.70m	14.75ft x 8.85ft
TOTAL AREA	38 sq m	404 sq ft

APARTMENT 3.11

Kitchen & Living	6.18m x 3.65m	20.26ft x 11.96ft
Bedroom 1	2.87m x 2.75m	9.40ft x 9.02ft
TOTAL AREA	30 sq m	327 sq ft

APARTMENT 3.12

Kitchen & Living	6.27m x 2.85m	20.57ft x 9.35ft
Bedroom 1	2.55m x 3.97m	8.36ft x 13.01ft
Balcony	5.31m x 1.28m	17.40ft x 4.20ft
TOTAL AREA	33 sq m	351 sq ft

APARTMENT 3.13

Kitchen & Living	3.64m x 5.79m	11.94ft x 19.00ft
Bedroom 1	2.92m x 3.01m	9.58ft x 9.88ft
TOTAL AREA	35 sq m	376 sq ft

APARTMENT 3.14

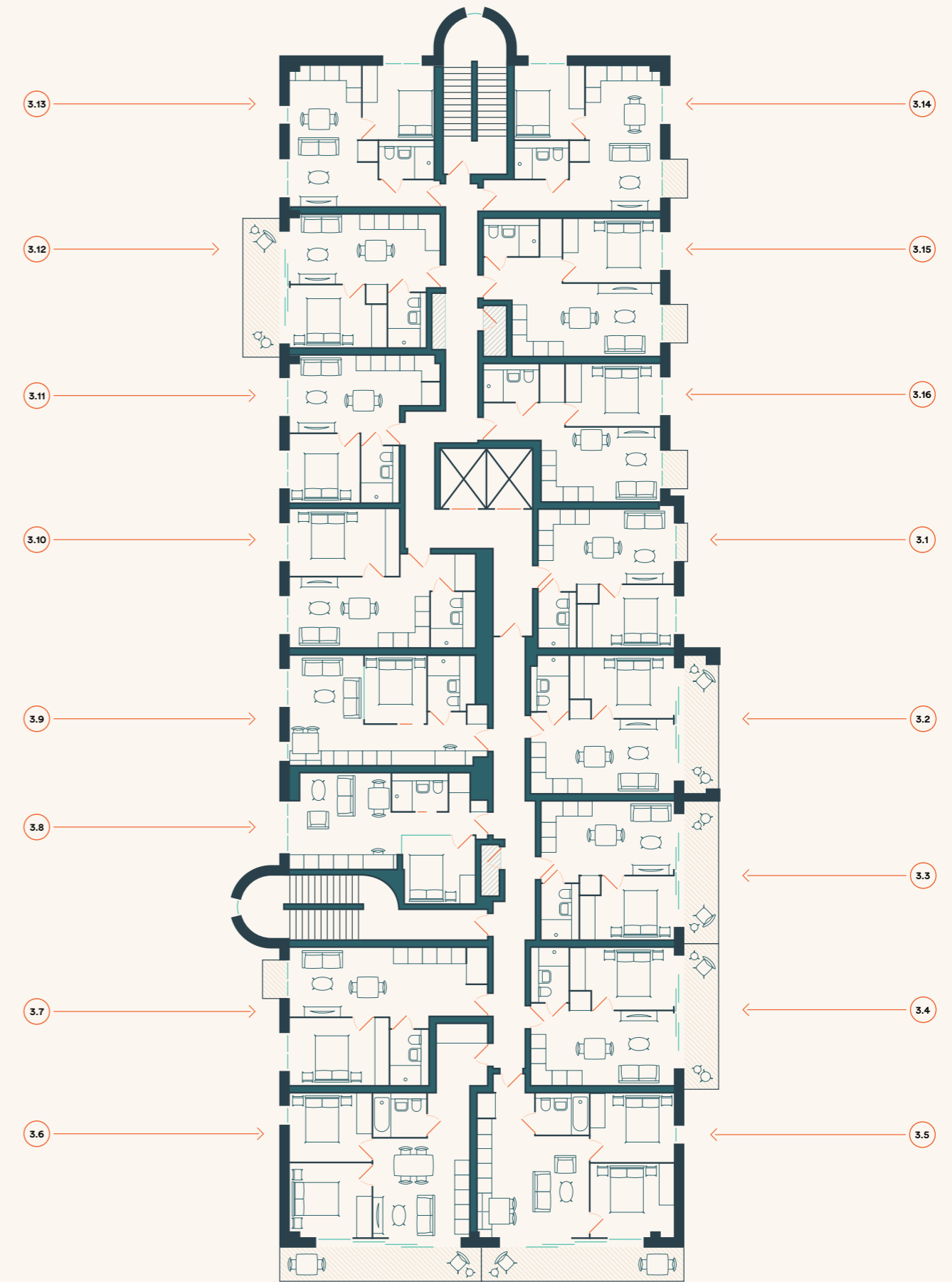
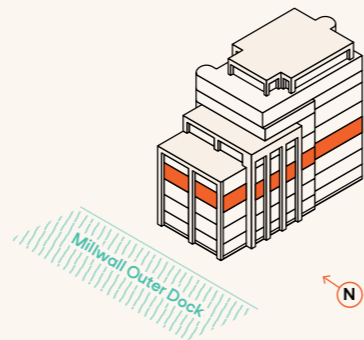
Kitchen & Living	3.70m x 5.96m	12.14ft x 19.56ft
Bedroom 1	2.90m x 3.01m	9.51ft x 9.88ft
Balcony	1.00m x 1.50m	3.28ft x 4.92ft
TOTAL AREA	38 sq m	407 sq ft

APARTMENT 3.15

Kitchen & Living	6.08m x 4.01m	19.95ft x 13.14ft
Bedroom 1	3.97m x 2.60m	13.03ft x 8.53ft
Balcony	1.00m x 1.50m	3.28ft x 4.92ft
TOTAL AREA	39 sq m	414 sq ft

APARTMENT 3.16

Kitchen & Living	4.86m x 3.01m	15.93ft x 9.88ft
Bedroom 1	3.86m x 2.55m	12.65ft x 8.37ft
Balcony	1.00m x 1.50m	3.28ft x 4.92ft
TOTAL AREA	35 sq m	380 sq ft



Fourth Floor

APARTMENT 4.1

Kitchen & Living	5.56m x 3.00m	18.24ft x 9.84ft
Bedroom 1	3.93m x 2.56m	12.89ft x 8.40ft
TOTAL AREA	32 sq m	342 sq ft

APARTMENT 4.2

Kitchen & Living	5.86m x 3.00m	19.23ft x 9.84ft
Bedroom 1	4.23m x 2.55m	13.88ft x 8.37ft
Balcony	5.88m x 1.39m	19.29ft x 4.56ft
TOTAL AREA	34 sq m	361 sq ft

APARTMENT 4.3

Kitchen & Living	5.86m x 3.39m	19.23ft x 11.12ft
Bedroom 1	3.17m x 3.35m	10.39ft x 10.98ft
Bedroom 2	2.64m x 3.84m	8.65ft x 12.60ft
Balcony 1	5.88m x 1.39m	19.29ft x 4.56ft
Balcony 2	3.50m x 1.39m	11.48ft x 4.56ft
TOTAL AREA	53 sq m	566 sq ft

APARTMENT 4.4

Kitchen & Living	4.84m x 5.10m	15.89ft x 16.72ft
Bedroom 1	3.14m x 3.78m	10.30ft x 12.41ft
Bedroom 2	4.43m x 3.11m	14.55ft x 10.20ft
Balcony 1	8.05m x 1.30m	26.40ft x 4.27ft
Balcony 2	2.34m x 1.39m	7.67ft x 4.56ft
TOTAL AREA	62 sq m	672 sq ft

APARTMENT 4.5

Kitchen & Living	3.92m x 6.03m	12.86ft x 19.78ft
Bedroom 1	3.02m x 3.34m	9.91ft x 10.94ft
Bedroom 2	3.34m x 2.83m	10.94ft x 9.27ft
Balcony	8.05m x 1.30m	26.40ft x 4.27ft
TOTAL AREA	50 sq m	536 sq ft

APARTMENT 4.6

Kitchen & Living	8.13m x 2.82m	26.67ft x 9.24ft
Bedroom 1	4.05m x 2.72m	13.30ft x 8.93ft
Balcony	1.00m x 1.50m	3.28ft x 4.92ft
TOTAL AREA	39 sq m	422 sq ft

APARTMENT 4.7

Kitchen & Living	4.68m x 3.92m	15.34ft x 12.86ft
Bedroom 1	2.98m x 2.81m	9.79ft x 9.23ft
TOTAL AREA	36 sq m	382 sq ft

APARTMENT 4.8

Kitchen & Living	4.51m x 2.92m	14.81ft x 9.59ft
Bedroom 1	2.76m x 2.50m	9.06ft x 8.20ft
TOTAL AREA	35 sq m	379 sq ft

APARTMENT 4.9

Kitchen & Living	5.74m x 2.87m	18.83ft x 9.40ft
Bedroom 1	4.50m x 2.70m	14.75ft x 8.85ft
TOTAL AREA	38 sq m	404 sq ft

APARTMENT 4.10

Kitchen & Living	6.18m x 3.65m	20.26ft x 11.96ft
Bedroom 1	2.87m x 2.75m	9.40ft x 9.02ft
TOTAL AREA	30 sq m	327 sq ft

APARTMENT 4.11

Kitchen & Living	6.27m x 2.85m	20.57ft x 9.35ft
Bedroom 1	2.55m x 3.97m	8.36ft x 13.01ft
Balcony	5.31m x 1.28m	17.40ft x 4.20ft
TOTAL AREA	33 sq m	351 sq ft

APARTMENT 4.12

Kitchen & Living	3.64m x 5.79m	11.94ft x 19.00ft
Bedroom 1	2.92m x 3.01m	9.58ft x 9.88ft
TOTAL AREA	35 sq m	376 sq ft

APARTMENT 4.13

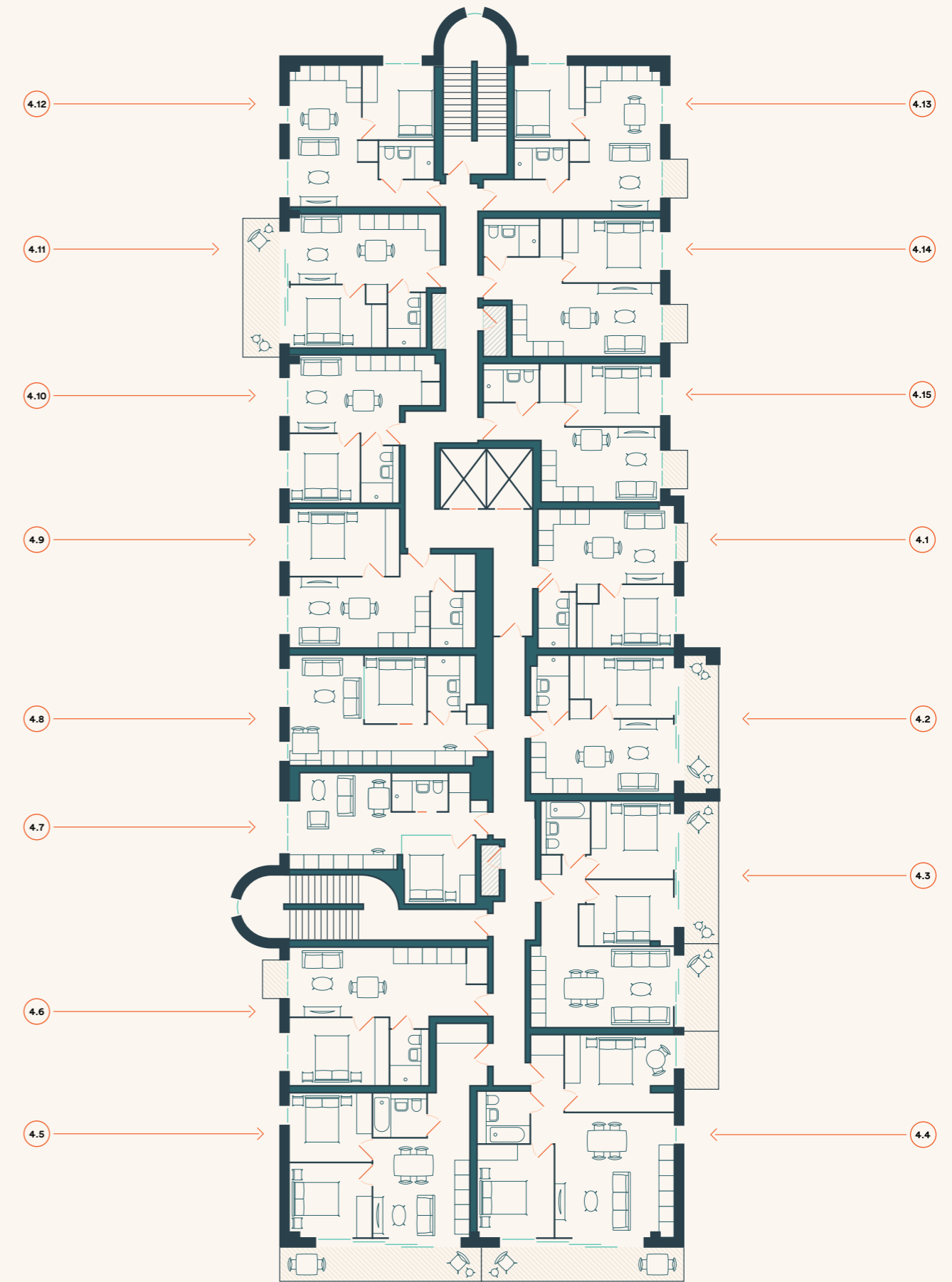
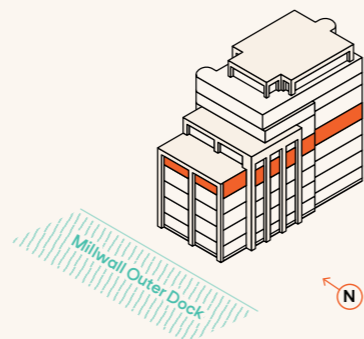
Kitchen & Living	3.70m x 5.96m	12.14ft x 19.56ft
Bedroom 1	2.90m x 3.01m	9.51ft x 9.88ft
Balcony	1.00m x 1.50m	3.28ft x 4.92ft
TOTAL AREA	38 sq m	407 sq ft

APARTMENT 4.14

Kitchen & Living	6.08m x 4.01m	19.95ft x 13.14ft
Bedroom 1	3.97m x 2.60m	13.03ft x 8.53ft
Balcony	1.00m x 1.50m	3.28ft x 4.92ft
TOTAL AREA	39 sq m	414 sq ft

APARTMENT 4.15

Kitchen & Living	4.86m x 3.01m	15.93ft x 9.88ft
Bedroom 1	3.86m x 2.55m	12.65ft x 8.37ft
Balcony	1.00m x 1.50m	3.28ft x 4.92ft
TOTAL AREA	35 sq m	380 sq ft



Fifth Floor

APARTMENT 5.1

Kitchen & Living	5.56m x 3.00m	18.24ft x 9.84ft
Bedroom 1	3.93m x 2.56m	12.89ft x 8.40ft
TOTAL AREA	32 sq m	342 sq ft

APARTMENT 5.2

Kitchen & Living	5.86m x 3.00m	19.23ft x 9.84ft
Bedroom 1	4.23m x 2.55m	13.88ft x 8.37ft
Balcony	5.88m x 1.39m	19.29ft x 4.56ft
TOTAL AREA	34 sq m	361 sq ft

APARTMENT 5.3

Kitchen & Living	5.86m x 5.43m	28.09ft x 17.81ft
Bedroom 1	3.45m x 4.36m	11.32ft x 14.30ft
Bedroom 2	3.35m x 3.25m	10.98ft x 10.66ft
Balcony 1	5.88m x 1.39m	19.29ft x 4.56ft
Balcony 2	5.88m x 1.39m	19.29ft x 4.56ft
Balcony 3	8.01m x 5.62m	26.29ft x 18.44ft
TOTAL AREA	81 sq m	869 sq ft

APARTMENT 5.4

Kitchen & Living	7.51m x 3.10m	24.64ft x 10.16ft
Bedroom 1	4.06m x 2.70m	13.32ft x 8.86ft
Balcony	5.62m x 7.68m	18.45ft x 25.19ft
TOTAL AREA	45 sq m	482 sq ft

APARTMENT 5.5

Kitchen & Living	4.68m x 3.92m	15.34ft x 12.86ft
Bedroom 1	2.98m x 2.81m	9.79ft x 9.23ft
TOTAL AREA	36 sq m	382 sq ft

APARTMENT 5.6

Kitchen & Living	4.51m x 2.92m	14.81ft x 9.59ft
Bedroom 1	2.76m x 2.50m	9.06ft x 8.20ft
TOTAL AREA	35 sq m	379 sq ft

APARTMENT 5.7

Kitchen & Living	5.74m x 2.87m	18.83ft x 9.40ft
Bedroom 1	4.50m x 2.70m	14.75ft x 8.85ft
TOTAL AREA	38 sq m	404 sq ft

APARTMENT 5.8

Kitchen & Living	6.18m x 3.65m	20.26ft x 11.96ft
Bedroom 1	2.87m x 2.75m	9.40ft x 9.02ft
TOTAL AREA	30 sq m	327 sq ft

APARTMENT 5.9

Kitchen & Living	6.27m x 2.85m	20.57ft x 9.35ft
Bedroom 1	2.55m x 3.97m	8.36ft x 13.01ft
Balcony	5.31m x 1.28m	17.40ft x 4.20ft
TOTAL AREA	33 sq m	351 sq ft

APARTMENT 5.10

Kitchen & Living	3.64m x 5.79m	11.94ft x 19.00ft
Bedroom 1	2.92m x 3.01m	9.58ft x 9.88ft
TOTAL AREA	35 sq m	376 sq ft

APARTMENT 5.11

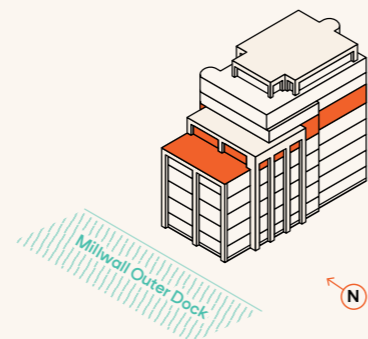
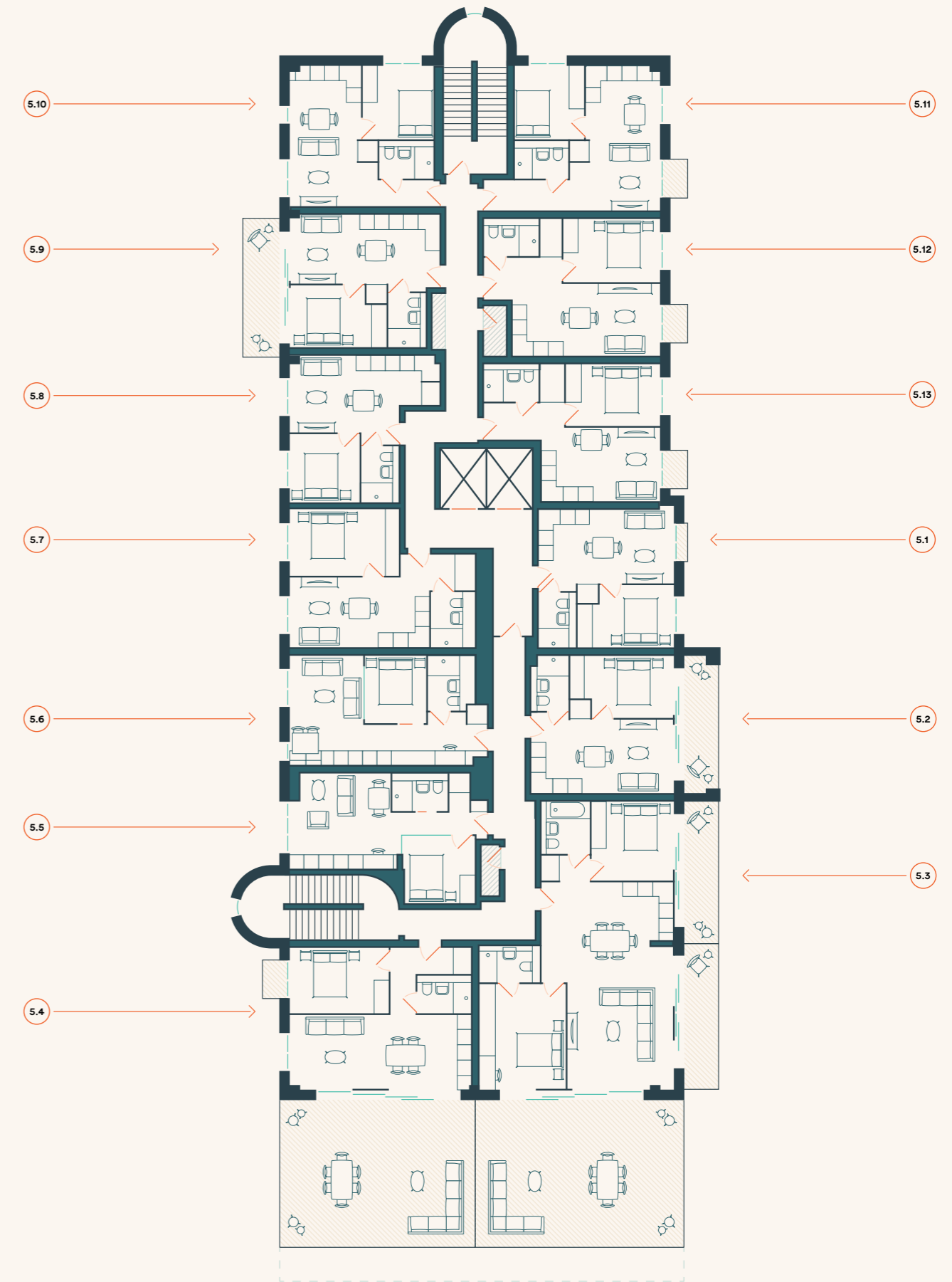
Kitchen & Living	3.70m x 5.96m	12.14ft x 19.56ft
Bedroom 1	2.90m x 3.01m	9.51ft x 9.88ft
Balcony	1.00m x 1.50m	3.28ft x 4.92ft
TOTAL AREA	38 sq m	407 sq ft

APARTMENT 5.12

Kitchen & Living	6.08m x 4.01m	19.95ft x 13.14ft
Bedroom 1	3.97m x 2.60m	13.03ft x 8.53ft
Balcony	1.00m x 1.50m	3.28ft x 4.92ft
TOTAL AREA	39 sq m	414 sq ft

APARTMENT 5.13

Kitchen & Living	4.86m x 3.01m	15.93ft x 9.88ft
Bedroom 1	3.86m x 2.55m	12.65ft x 8.37ft
Balcony	1.00m x 1.50m	3.28ft x 4.92ft
TOTAL AREA	35 sq m	380 sq ft



Sixth Floor

APARTMENT 6.1

Kitchen & Living	7.26m x 3.32m	23.82ft x 10.89ft
Bedroom 1	2.73m x 3.86m	8.97ft x 12.68ft
TOTAL AREA	38 sq m	410 sq ft

APARTMENT 6.2

Kitchen & Living	6.88m x 5.53m	22.57ft x 18.13ft
Bedroom 1	7.26m x 3.35m	23.83ft x 10.99ft
Bedroom 2	2.75m x 4.90m	9.02ft x 16.09
Balcony 1	9.56m x 5.65m	31.36ft x 18.52ft
Balcony 2	11.73m x 1.40m	38.48ft x 4.59ft
TOTAL AREA	91 sq m	974 sq ft

APARTMENT 6.3 (Lower Floor)

Kitchen & Living	5.48m x 6.06m	17.97ft x 19.88ft
Bedroom 1	3.96m x 3.25m	12.98ft x 10.66ft
Bedroom 2	4.12m x 3.28m	13.52ft x 10.76ft
Bedroom 3	5.45m x 4.12m	17.87ft x 13.52ft
Balcony	2.50m x 1.25m	8.20ft x 4.10ft
TOTAL AREA	107 sq m	1154 sq ft

APARTMENT 6.4

Kitchen & Living	5.74m x 2.87m	18.83ft x 9.40ft
Bedroom 1	4.50m x 2.70m	14.75ft x 8.85ft
TOTAL AREA	32 sq m	341 sq ft

APARTMENT 6.5

Kitchen & Living	6.18m x 3.65m	20.26ft x 11.96ft
Bedroom 1	2.87m x 2.75m	9.40ft x 9.02ft
TOTAL AREA	31 sq m	328 sq ft

APARTMENT 6.6

Kitchen & Living	6.18m x 5.12m	20.26ft x 16.81ft
Bedroom 1	2.83m x 4.75m	9.27ft x 15.59ft
Bedroom 2	3.57m x 3.23m	11.71ft x 10.61ft
Balcony	5.31m x 1.28m	17.40ft x 4.20ft
TOTAL AREA	70 sq m	748 sq ft

APARTMENT 6.7

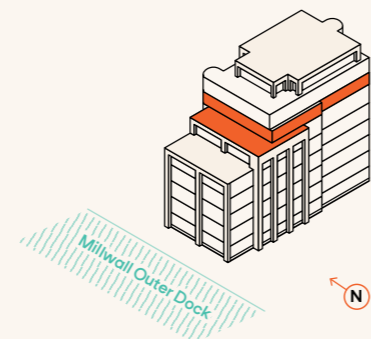
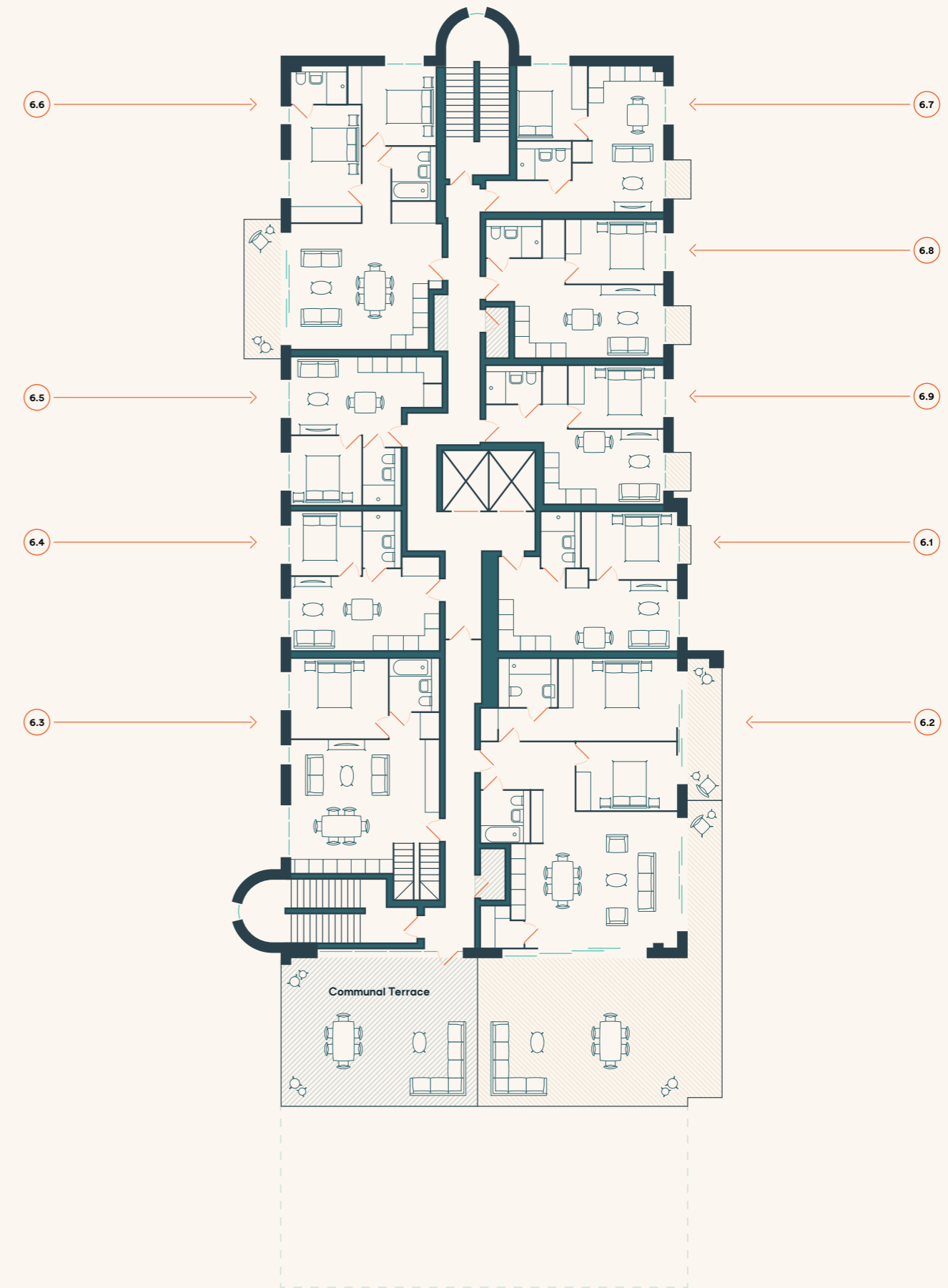
Kitchen & Living	3.70m x 5.96m	12.14ft x 19.56ft
Bedroom 1	2.90m x 3.01m	9.51ft x 9.88ft
Balcony	1.00m x 1.50m	3.28ft x 4.92ft
TOTAL AREA	38 sq m	408 sq ft

APARTMENT 6.8

Kitchen & Living	6.08m x 4.01m	19.95ft x 13.14ft
Bedroom 1	3.97m x 2.60m	13.03ft x 8.53ft
Balcony	1.00m x 1.50m	3.28ft x 4.92ft
TOTAL AREA	39 sq m	414 sq ft

APARTMENT 6.9

Kitchen & Living	4.86m x 3.01m	15.93ft x 9.88ft
Bedroom 1	3.86m x 2.55m	12.65ft x 8.37ft
Balcony	1.00m x 1.50m	3.28ft x 4.92ft
TOTAL AREA	35 sq m	380 sq ft



Seventh Floor

APARTMENT 7.1

Kitchen & Living	6.71m x 3.81m	22.01ft x 12.50ft
Bedroom 1	3.33m x 2.73m	10.93ft x 8.96ft
TOTAL AREA	35 sq m	377 sq ft

APARTMENT 7.2

Kitchen & Living	6.33m x 5.53m	20.76ft x 18.13ft
Bedroom 1	6.59m x 3.35m	21.61ft x 10.99ft
Bedroom 2	3.61m x 2.75m	11.85ft x 9.02ft
Balcony 1	5.94m x 1.14m	19.49ft x 3.74ft
TOTAL AREA	84 sq m	904 sq ft

APARTMENT 6.3 (Upper Floor)

Kitchen & Living	5.48m x 6.06m	17.97ft x 19.88ft
Bedroom 1	3.96m x 3.25m	12.98ft x 10.66ft
Bedroom 2	4.12m x 3.28m	13.52ft x 10.76ft
Bedroom 3	5.45m x 4.12m	17.87ft x 13.52ft
Balcony	2.50m x 1.25m	8.20ft x 4.10ft
TOTAL AREA	107 sq m	1154 sq ft

APARTMENT 7.3

Kitchen & Living	5.74m x 2.87m	18.83ft x 9.40ft
Bedroom 1	4.50m x 2.70m	14.75ft x 8.85ft
TOTAL AREA	32 sq m	341 sq ft

APARTMENT 7.4

Kitchen & Living	6.18m x 3.65m	20.26ft x 11.96ft
Bedroom 1	2.87m x 2.75m	9.40ft x 9.02ft
TOTAL AREA	31 sq m	328 sq ft

APARTMENT 7.5

Kitchen & Living	6.18m x 5.12m	20.26ft x 16.81ft
Bedroom 1	2.83m x 4.75m	9.27ft x 15.59ft
Bedroom 2	3.57m x 3.23m	11.71ft x 10.61ft
Balcony	5.31m x 1.28m	17.40ft x 4.20ft
TOTAL AREA	70 sq m	748 sq ft

APARTMENT 7.6

Kitchen & Living	3.70m x 5.96m	12.14ft x 19.56ft
Bedroom 1	2.90m x 3.01m	9.51ft x 9.88ft
Balcony	1.00m x 1.50m	3.28ft x 4.92ft
TOTAL AREA	38 sq m	408 sq ft

APARTMENT 7.6

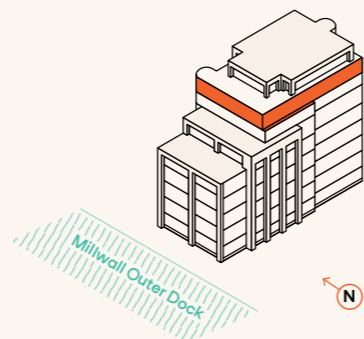
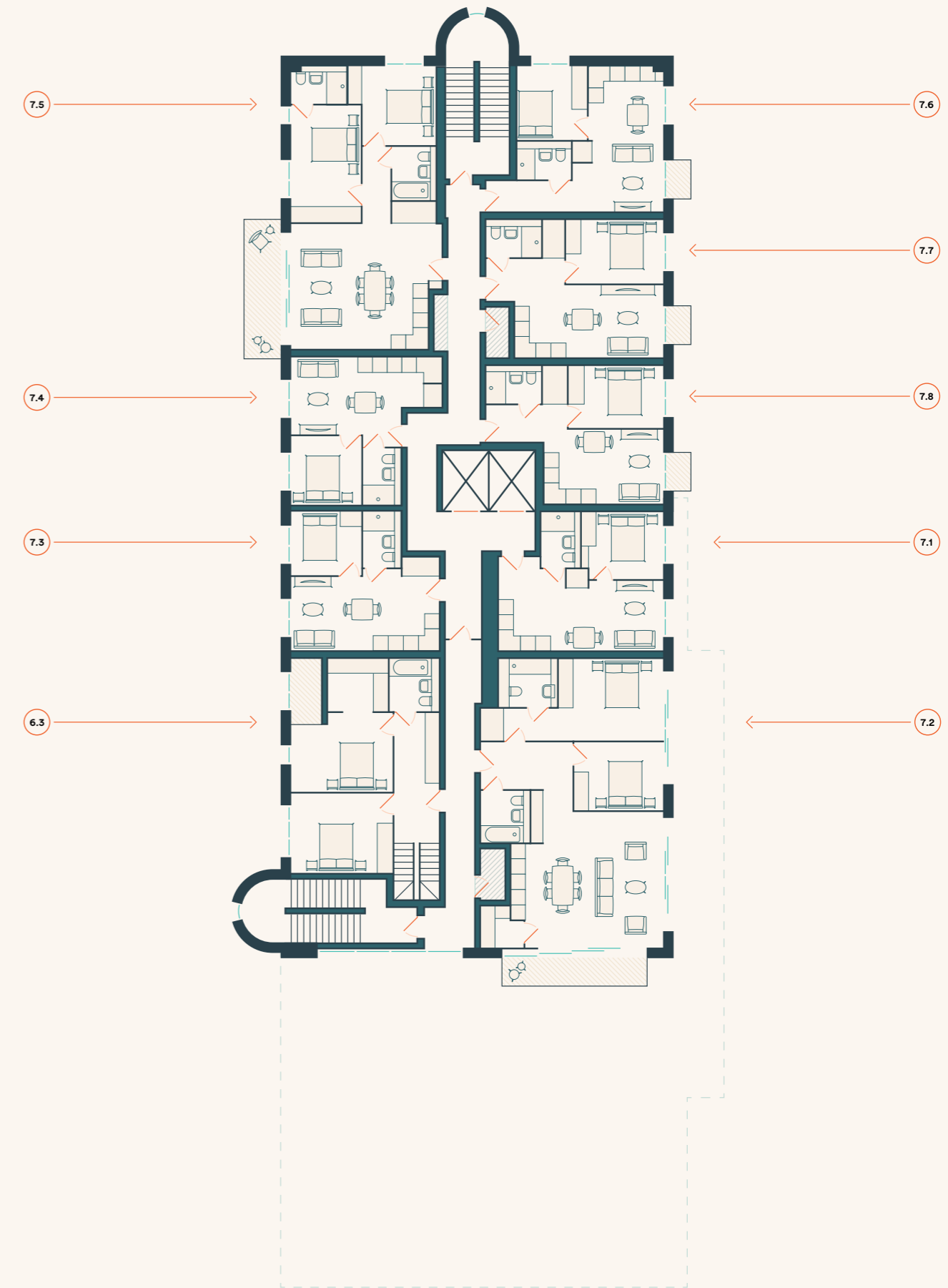
Kitchen & Living	3.70m x 5.96m	12.14ft x 19.56ft
Bedroom 1	2.90m x 3.01m	9.51ft x 9.88ft
Balcony	1.00m x 1.50m	3.28ft x 4.92ft
TOTAL AREA	38 sq m	408 sq ft

APARTMENT 7.7

Kitchen & Living	6.08m x 4.01m	19.95ft x 13.14ft
Bedroom 1	3.97m x 2.60m	13.03ft x 8.53ft
Balcony	1.00m x 1.50m	3.28ft x 4.92ft
TOTAL AREA	39 sq m	414 sq ft

APARTMENT 7.8

Kitchen & Living	4.86m x 3.01m	15.93ft x 9.88ft
Bedroom 1	3.86m x 2.55m	12.65ft x 8.37ft
Balcony	1.00m x 1.50m	3.28ft x 4.92ft
TOTAL AREA	35 sq m	380 sq ft



Eighth Floor

APARTMENT 8.1

Kitchen & Living	6.58m x 7.28m	21.59ft x 23.89ft
Bedroom 1	5.14m x 3.71m	16.87ft x 12.17ft
Bedroom 2	3.24m x 3.70m	10.63ft x 12.14ft
Balcony 1	7.00m x 11.80m	22.97ft x 38.71ft

TOTAL AREA	84 sq m	908 sq ft
-------------------	----------------	------------------

APARTMENT 8.2

Kitchen & Living	5.52m x 4.96m	18.10ft x 16.26ft
Bedroom 1	2.75m x 4.00m	9.02ft x 13.12ft
Bedroom 2	3.49m x 4.20m	11.46ft x 13.77ft
Balcony 1	8.13m x 11.80m	26.68ft x 38.71ft

TOTAL AREA	71 sq m	766 sq ft
-------------------	----------------	------------------

APARTMENT 8.3

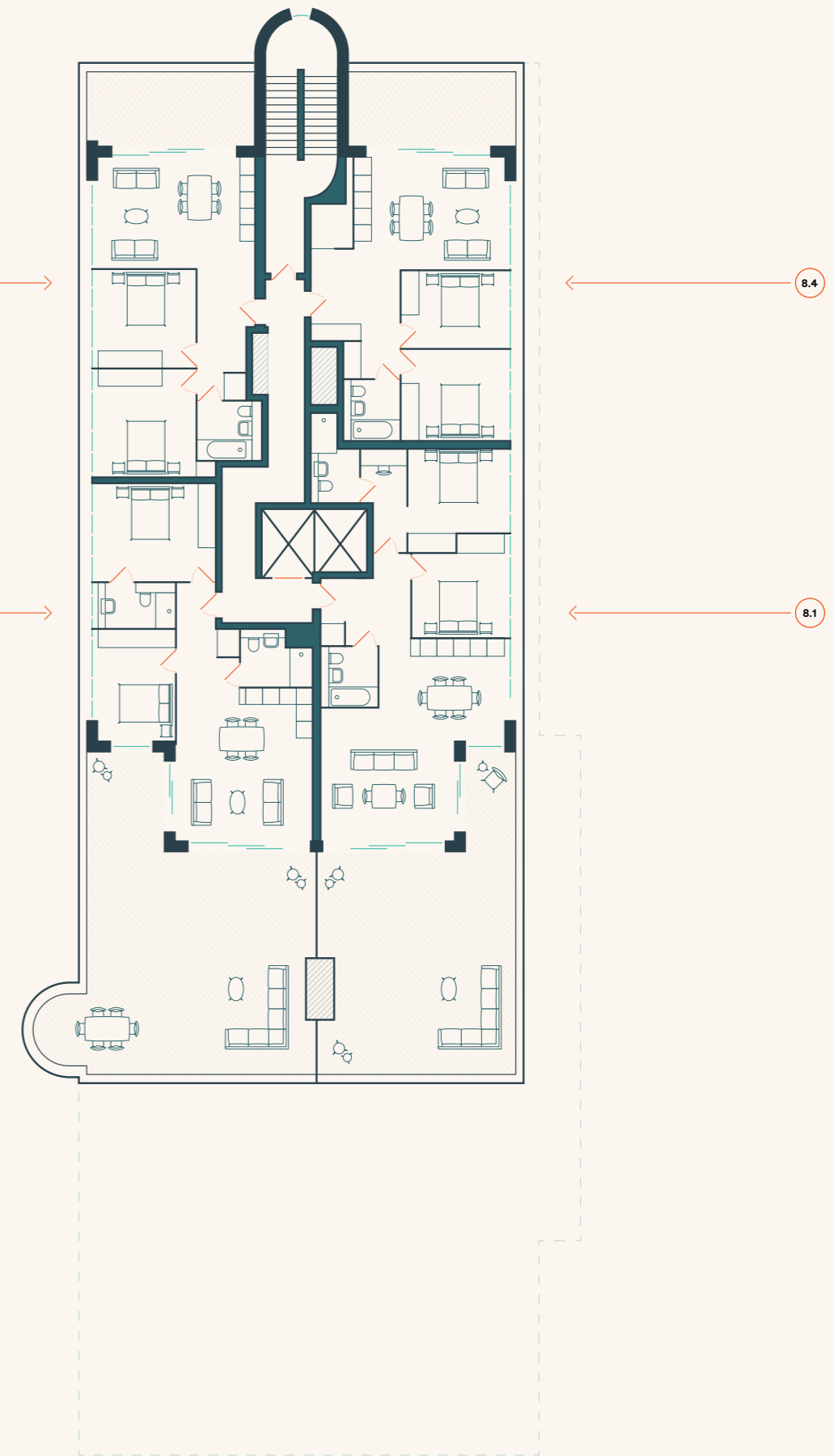
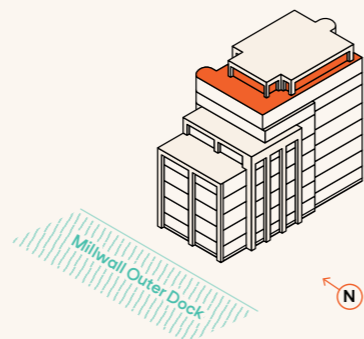
Kitchen & Living	3.98m x 5.66m	13.05ft x 18.58ft
Bedroom 1	3.84m x 3.58m	12.60ft x 11.75ft
Bedroom 2	3.50m x 3.48m	11.48ft x 11.42ft
Balcony 1	5.95m x 2.60m	19.53ft x 8.54ft

TOTAL AREA	64 sq m	690 sq ft
-------------------	----------------	------------------

APARTMENT 8.4

Kitchen & Living	5.38m x 4.02m	17.65ft x 13.18ft
Bedroom 1	2.75m x 3.67m	9.02ft x 12.03ft
Bedroom 2	3.67m x 3.25m	12.03ft x 10.66ft
Balcony 1	5.63m x 2.60m	19.53ft x 8.54ft

TOTAL AREA	65 sq m	701 sq ft
-------------------	----------------	------------------





COMMUNAL

- 5th floor communal terrace fronting dock
- Daytime concierge (hours TBC)
- Lobby with residents seating and secure mailboxes, parcel store
- Secure bike store
- Lifts to all floors
- External soft landscaping
- 10-year warranty

SECURITY

- CCTV to main entry points
- Manned concierge desk (hours TBC)
- Secure key fob access to communal entrance and bike store
- Audio and video entry systems



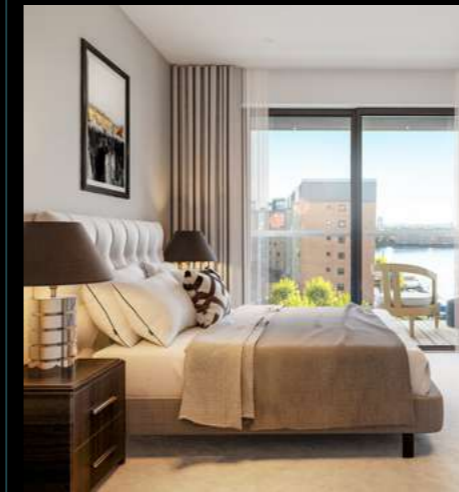
LIVING/ KITCHEN AREA

- Wide engineered oak flooring
- Fitted matt grey cabinetry and quartz worktop
- Chrome tap with stainless-steel kitchen sink
- Integrated appliances (70/30 fridge/freezer, electric oven with microwave, 4 plate ceramic hob, dishwasher (if applicable), fridge/freezer)
- Washer/dryer (location dependant on configuration)
- Smoked mirror splash back
- Bronze effect ironmongery



AUDIO/ VISUAL

- Pre-installed video entry system
- Integrated reception system (IRS), allowing for reception of both digital Freeview and satellite TV. TV outlets are featured to living rooms and bedrooms.



BEDROOM

- Pile carpet in neutral tones (wide engineered oak flooring for Manhattan units)
- Low energy downlighting
- Fitted wardrobe to master bedroom, bronze effect ironmongery



BATHROOM & WC

- Large format porcelain floor tiles
- Marble effect scalloped wall tiles
- Chrome finish shower set with fixed head and hand shower attachment
- Stone resin shower trays or bath (dependant on unit)
- Fixed panel glass shower screens (dependant on unit)
- Wall mounted WC
- Wall mounted basin, vanity unit and chrome mixer tap
- Mirrored vanity cabinet with integral LED lighting and internal shaver socket
- Chrome electric towel rail
- Recessed downlighting



TERRACES & BALCONIES

- Expansive terraces and or balconies with composite decking (dependant on unit)

INTERNAL FINISHES

- Expansive, charcoal slim line aluminium windows and doors
- Bronze effect switches, sockets and ironmongery
- Downlighting throughout
- Underfloor heating



LONDON GREEN

London Green is an experienced and agile property development firm, focused on the redevelopment of commercial property and the development of larger, bespoke residential schemes in London and the surrounding regions.

londongreen.com



SIXTY3 LONDON

Sixty3 London is a Mayfair based design studio specialising in residential interiors for private clients and developers. The team creates exquisite interiors that are not only beautiful but also functional.

Offering a range of interior design services, from early concept design to a full interior design package, Sixty3 London provide architectural, bespoke cabinetry and furniture design and are always striving to deliver their signature style of elegant and timeless luxury.

sixty3london.com



LEGAL DISCLAIMER: All particulars are set out as general outline only for the guidance of intending purchasers or lessees, and do not comprise part of an offer or contract. All descriptions, dimensions, specifications, references to condition and necessary permissions for use and occupation, and all other details are given in good faith and are believed to be correct, but any intending purchaser or tenant should not rely on them as statements or representations of fact but must satisfy themselves by inspection or otherwise as to the correctness of each item. Dock East is a marketing name and will not necessarily form part of the approved postal address. All computer generated images are indicative only, and furniture/fittings included in CGIs are not included. London Green reserves the right to amend the layouts and specification. Details are correct at the time of going to print, March 2020.

